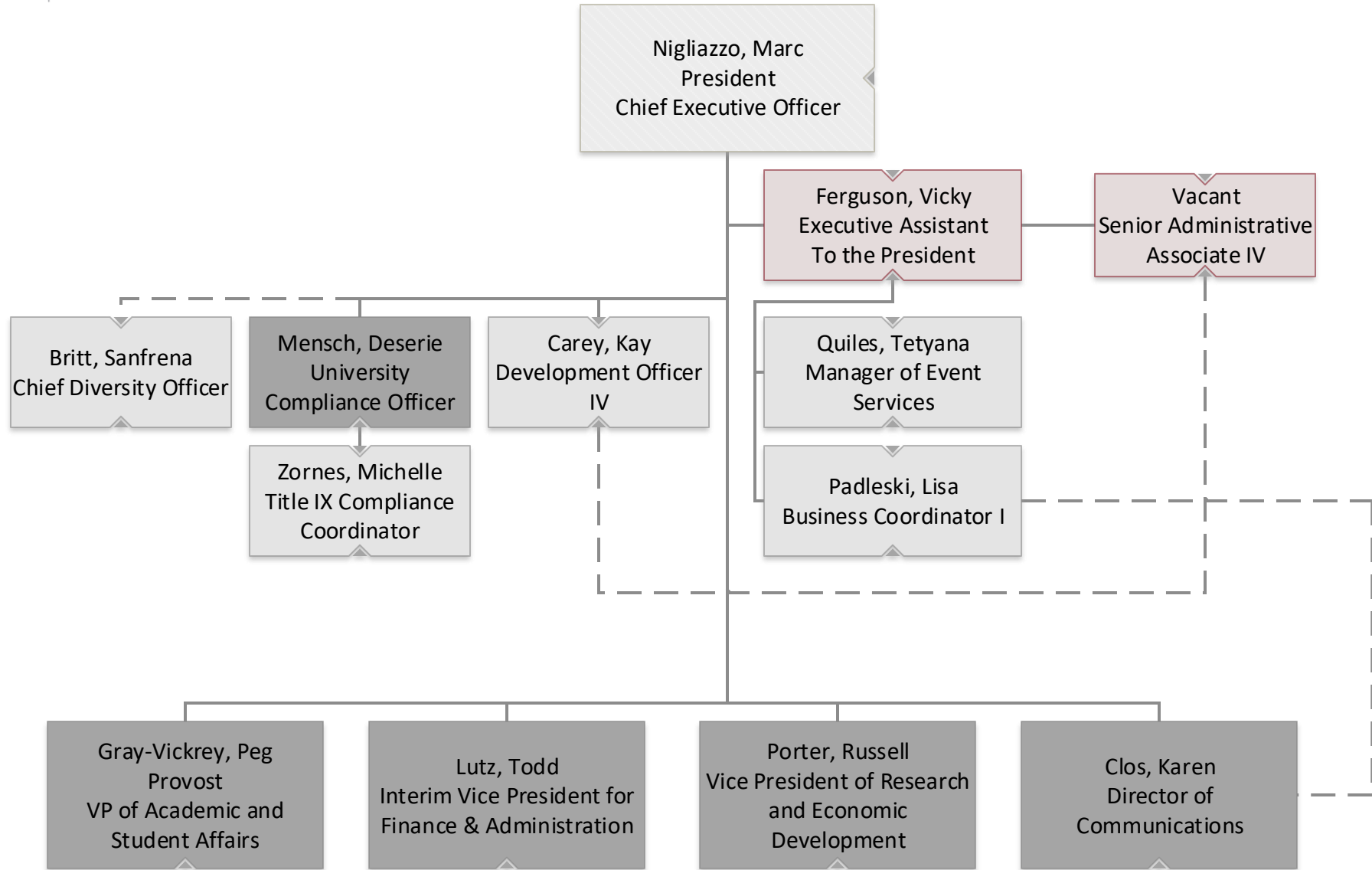




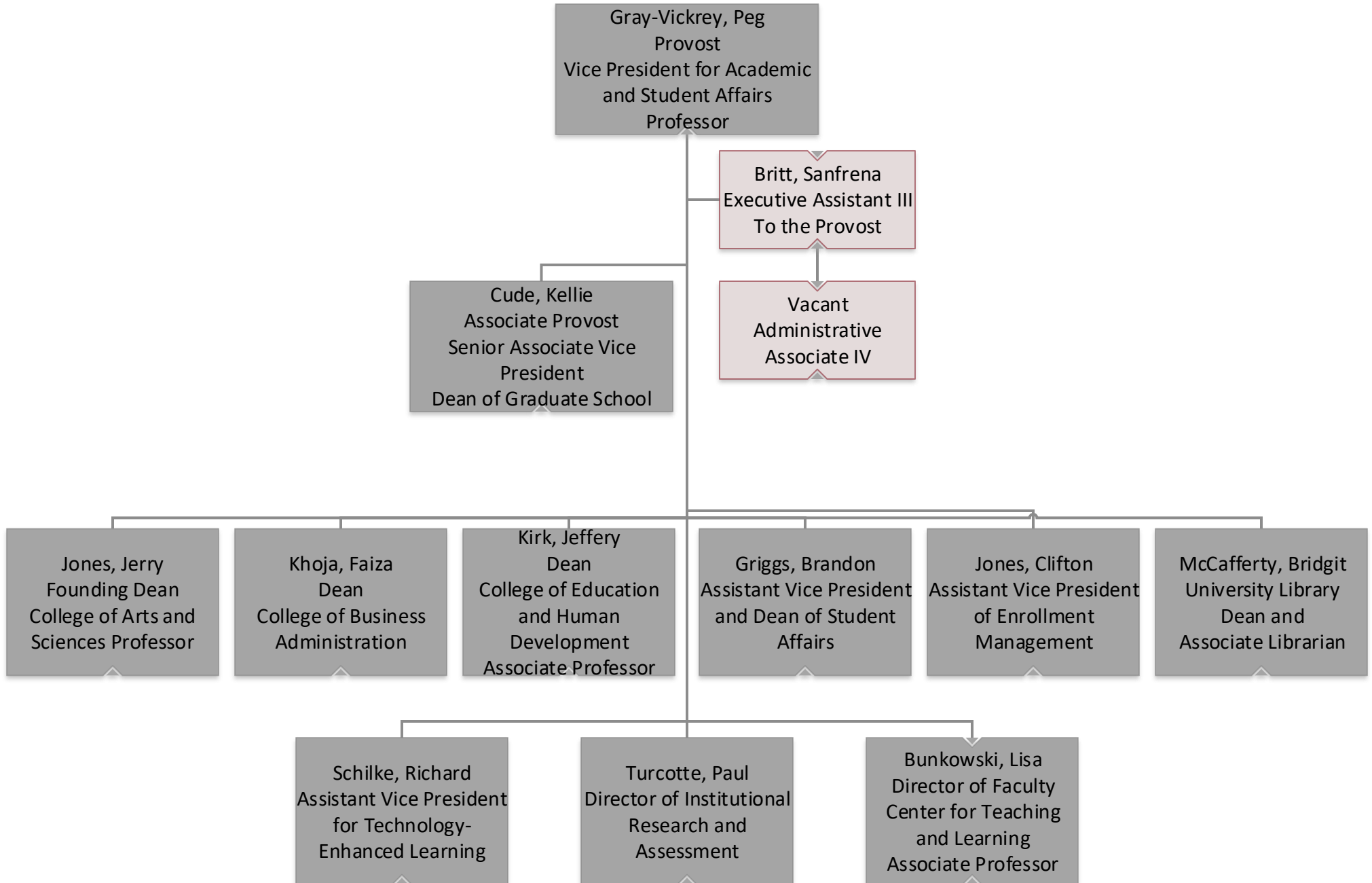
# Office of the President





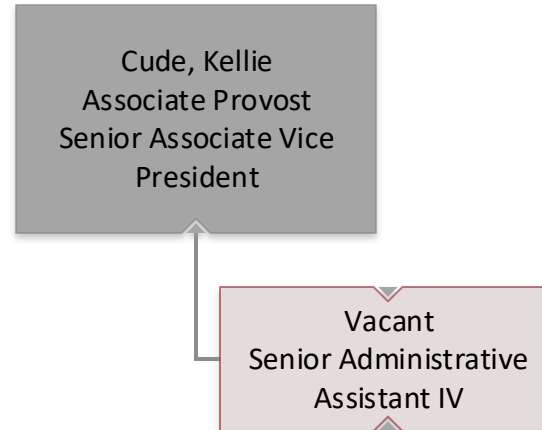
# Provost

## Vice President for Academic and Student Affairs



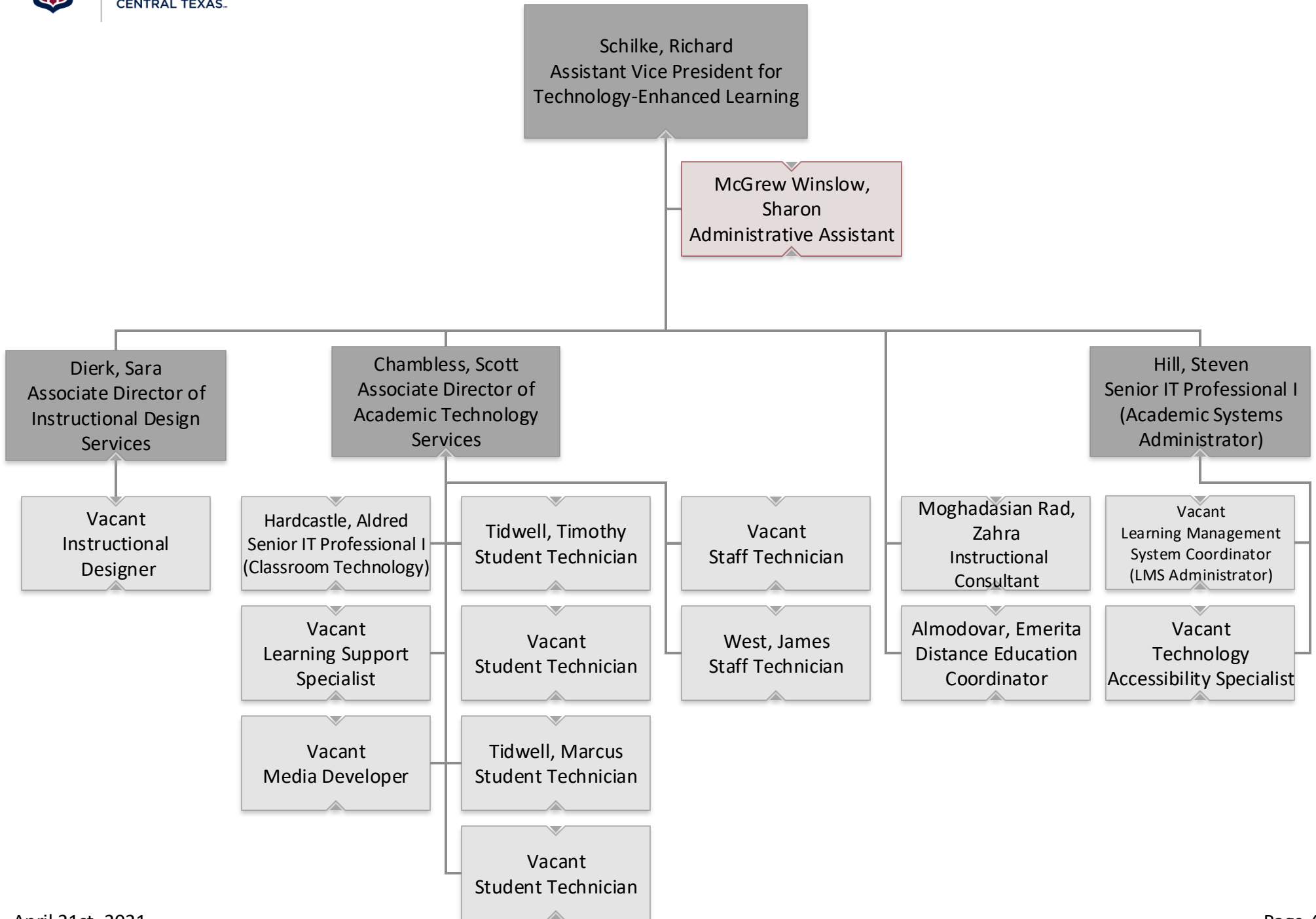


## Academic Affairs and Undergraduate Studies



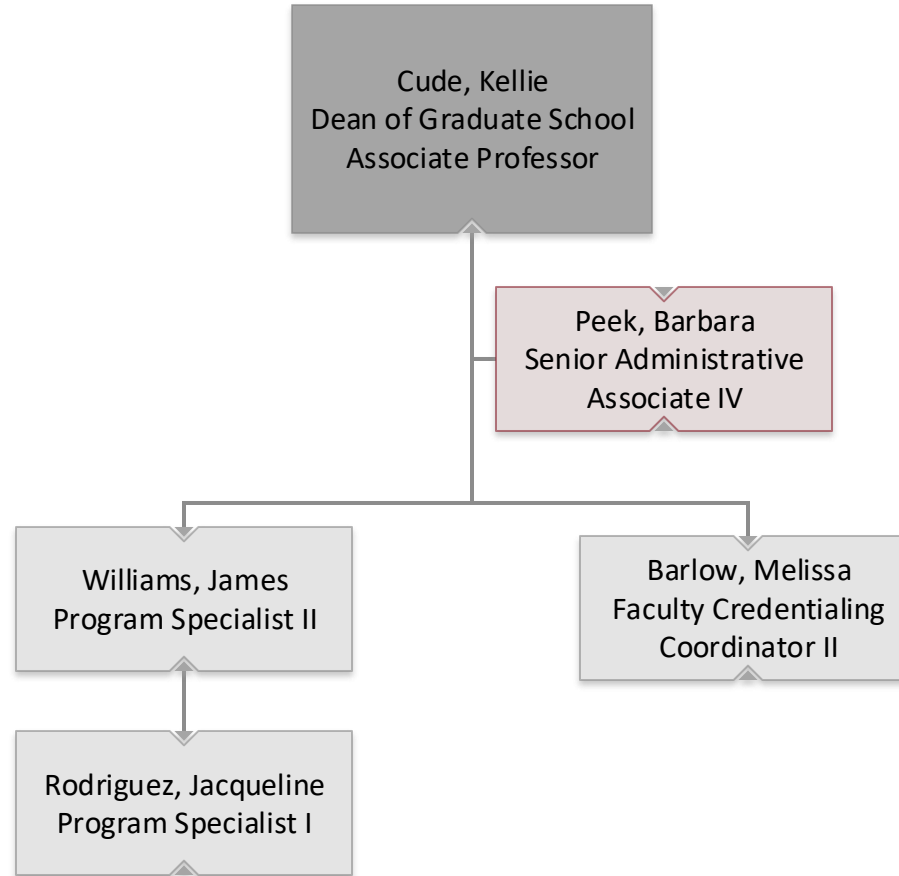


# Technology Enhanced Learning



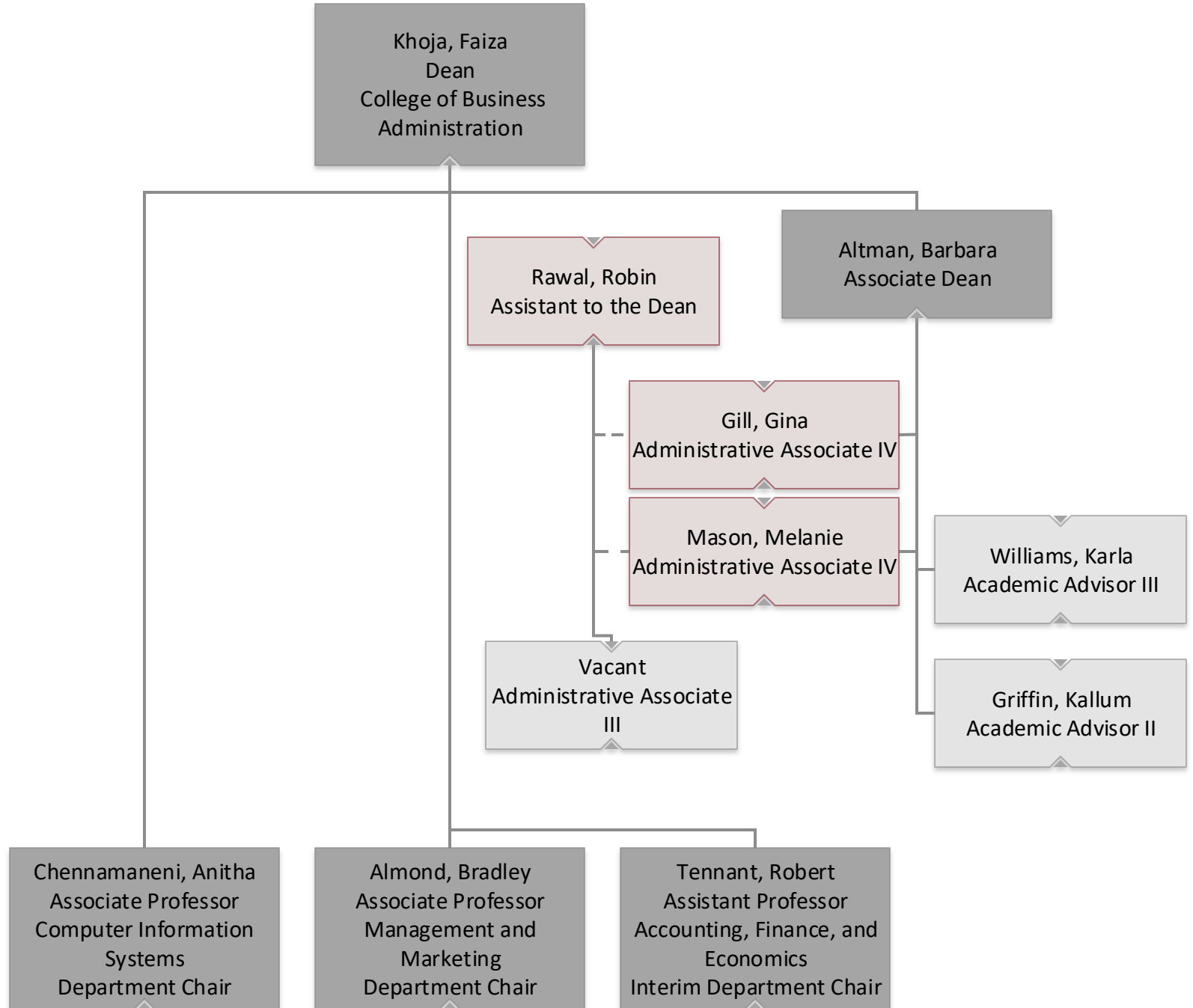


# Graduate School



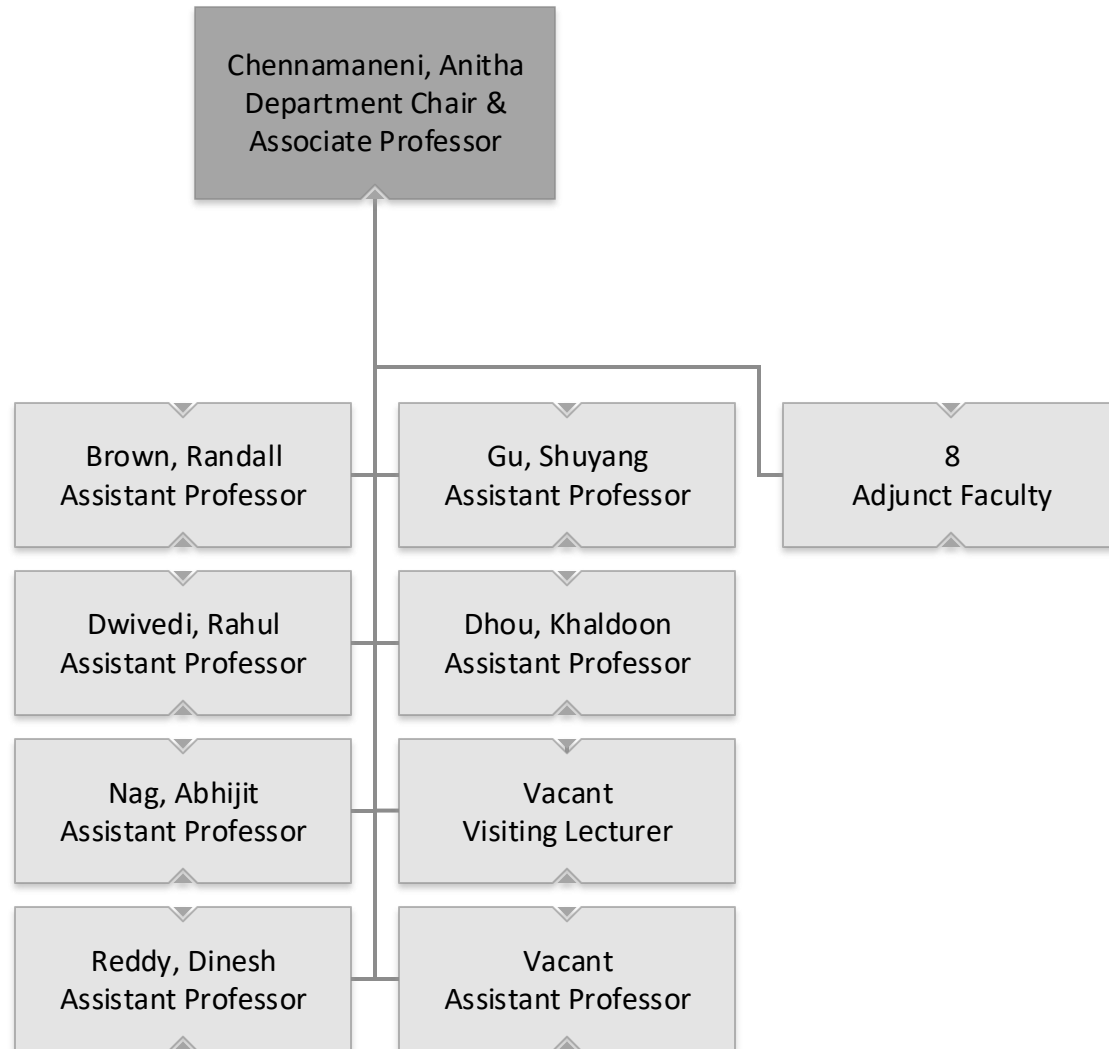


# College of Business Administration



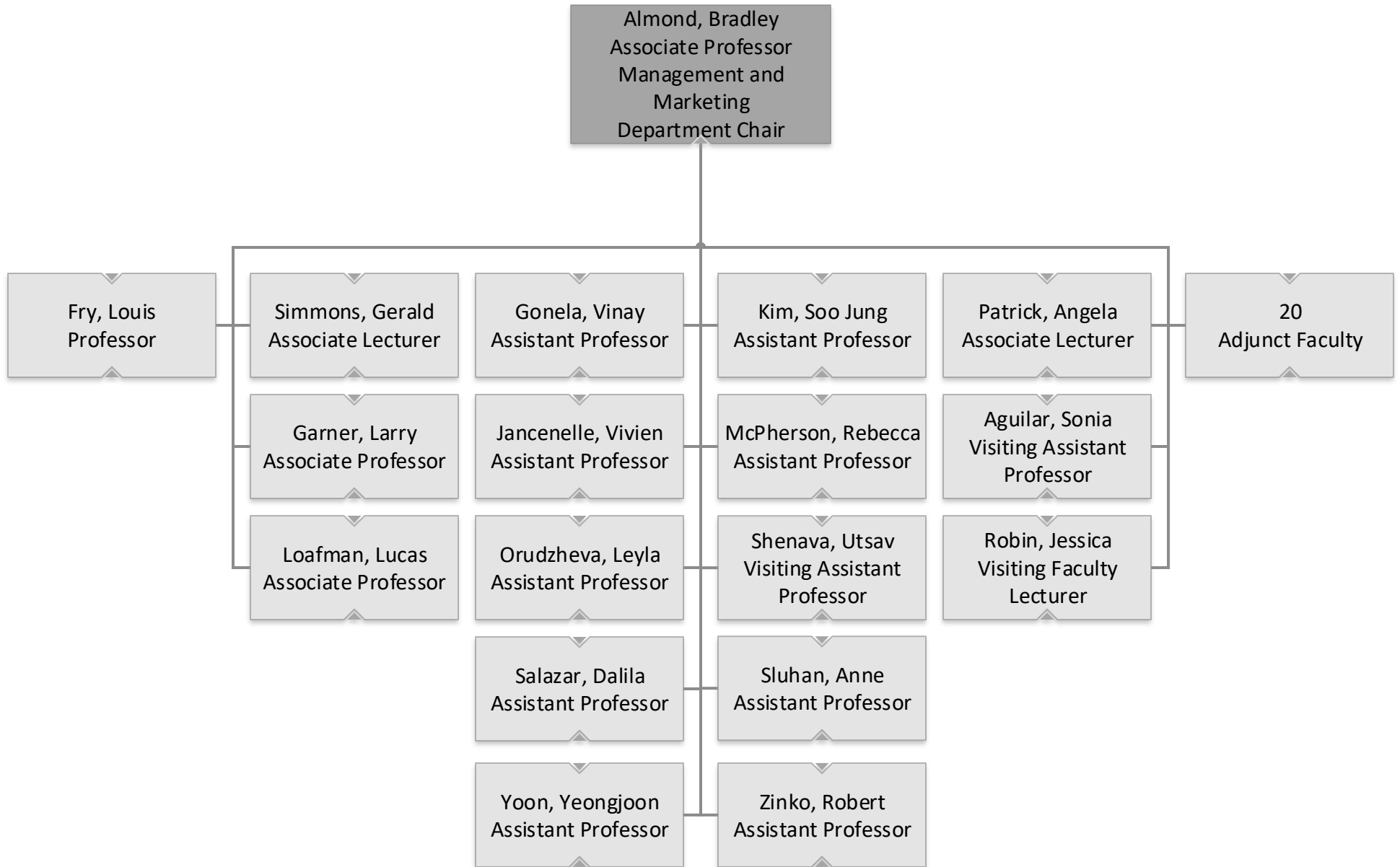


# College of Business Administration Computer Information Systems





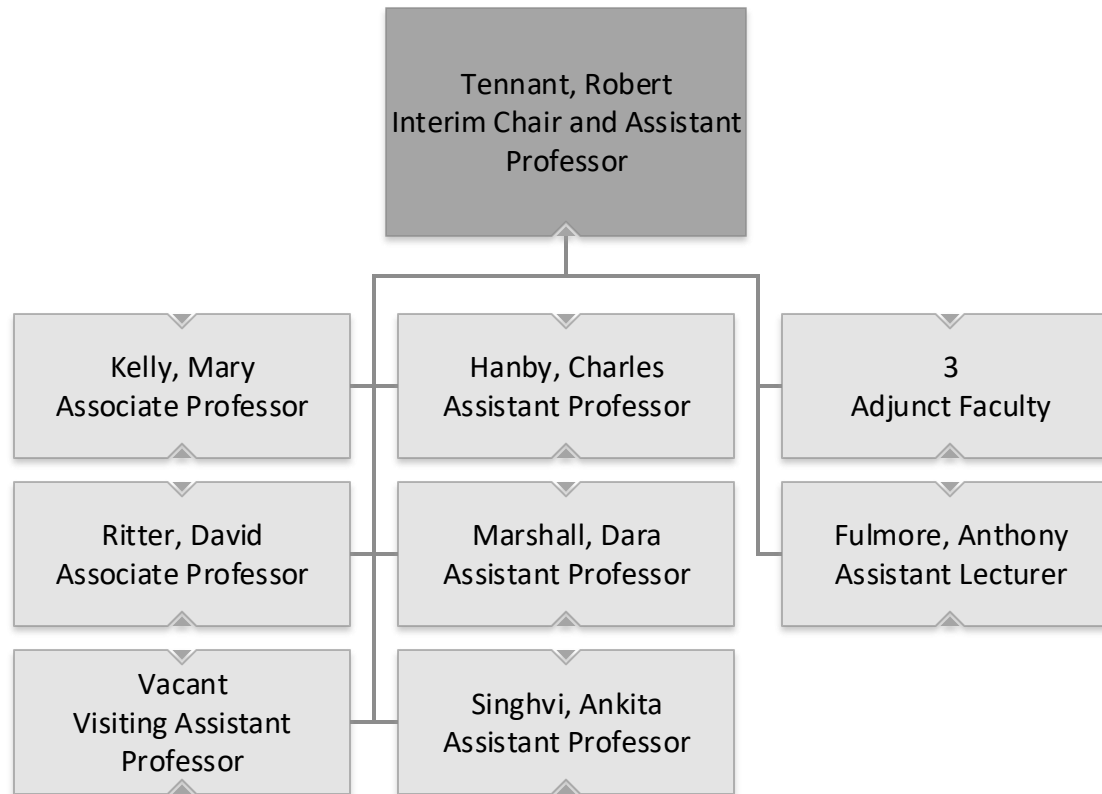
# College of Business Administration Management and Marketing





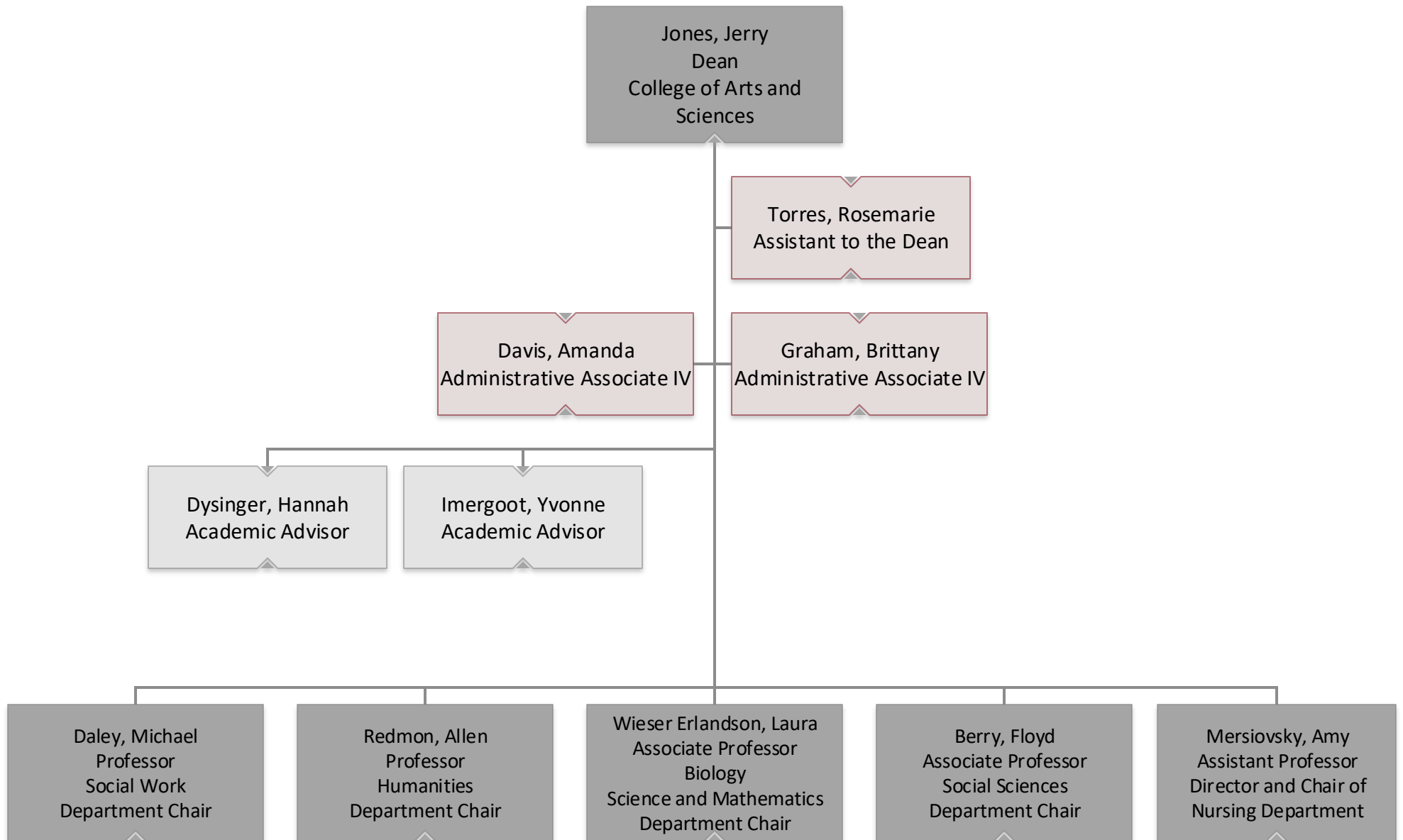


# College of Business Administration Accounting, Finance, and Economics



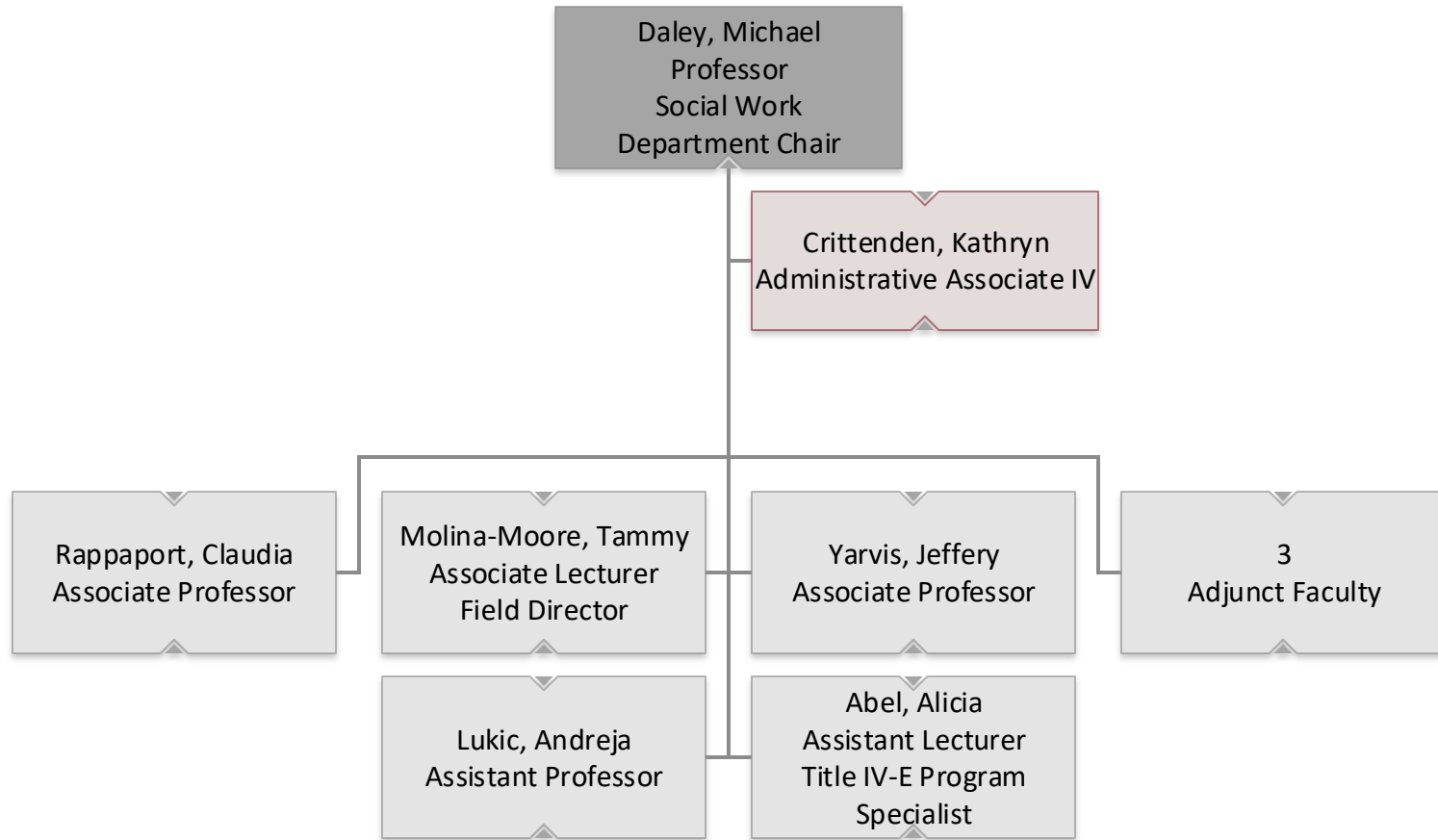


# College of Arts and Sciences



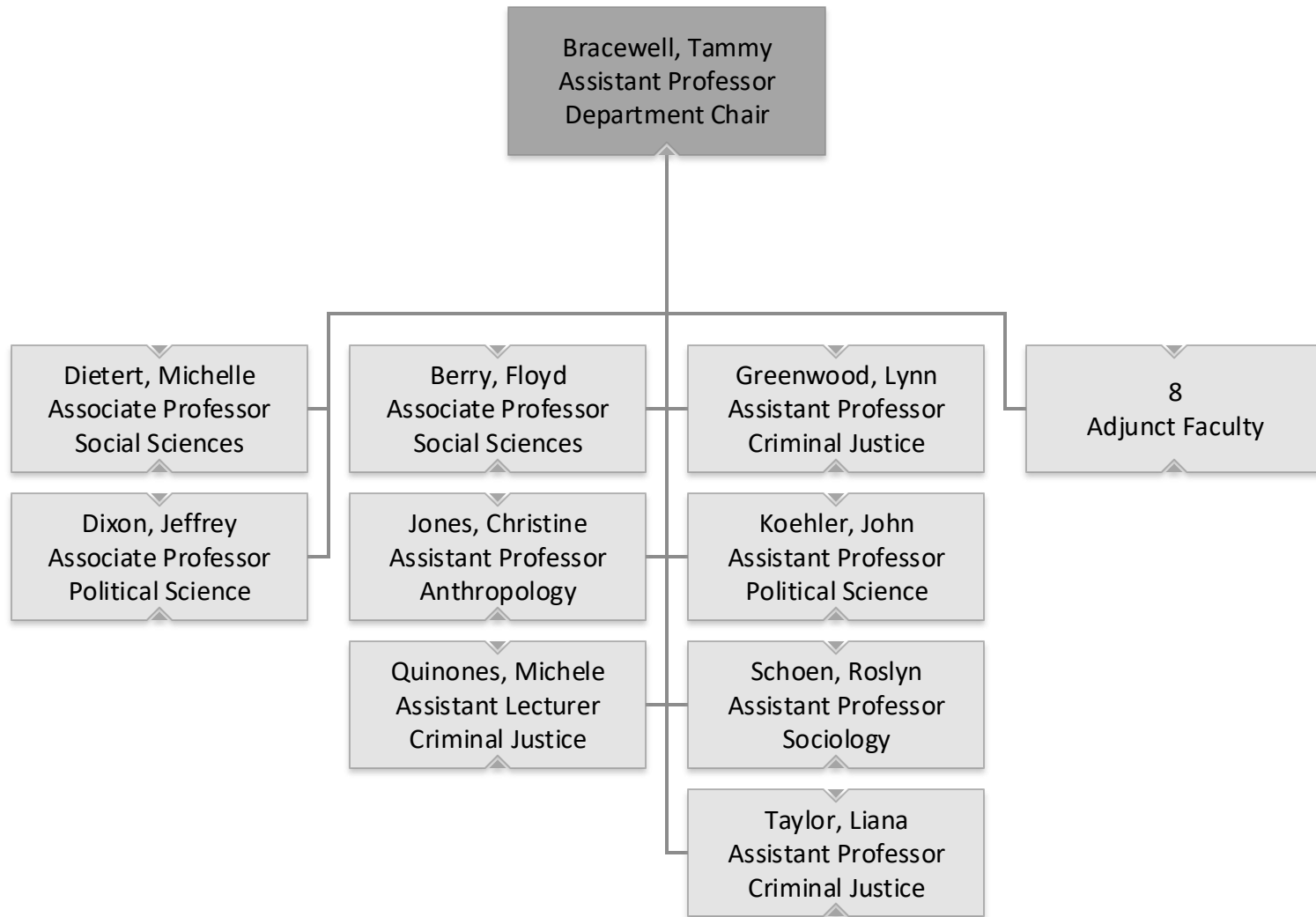


# College of Arts and Sciences Social Work



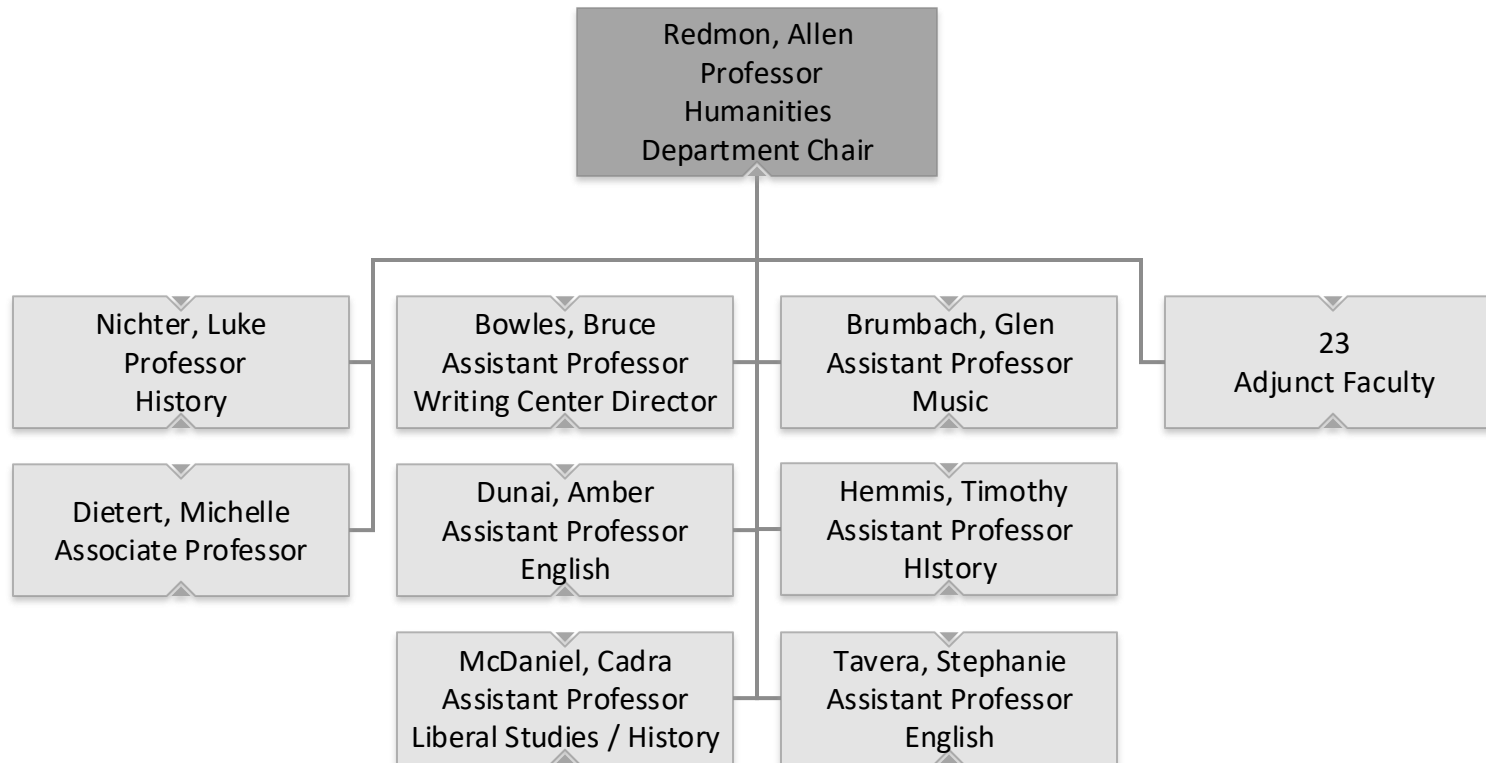


# College of Arts and Sciences Social Sciences



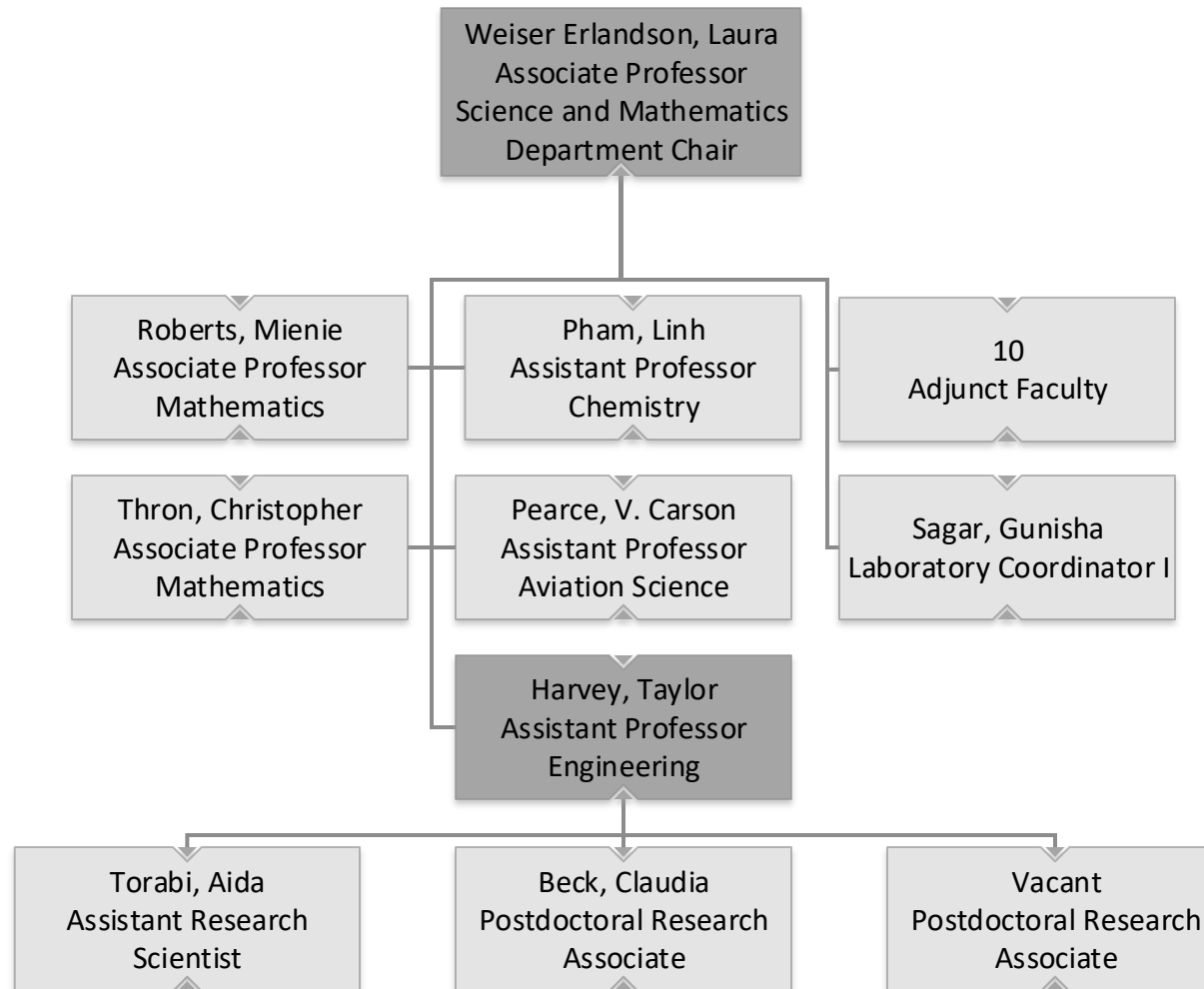


# College of Arts and Sciences Humanities



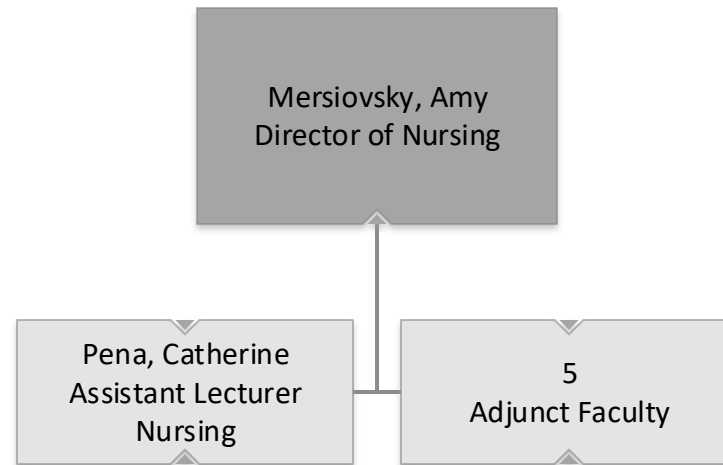


# College of Arts and Sciences Science and Mathematics



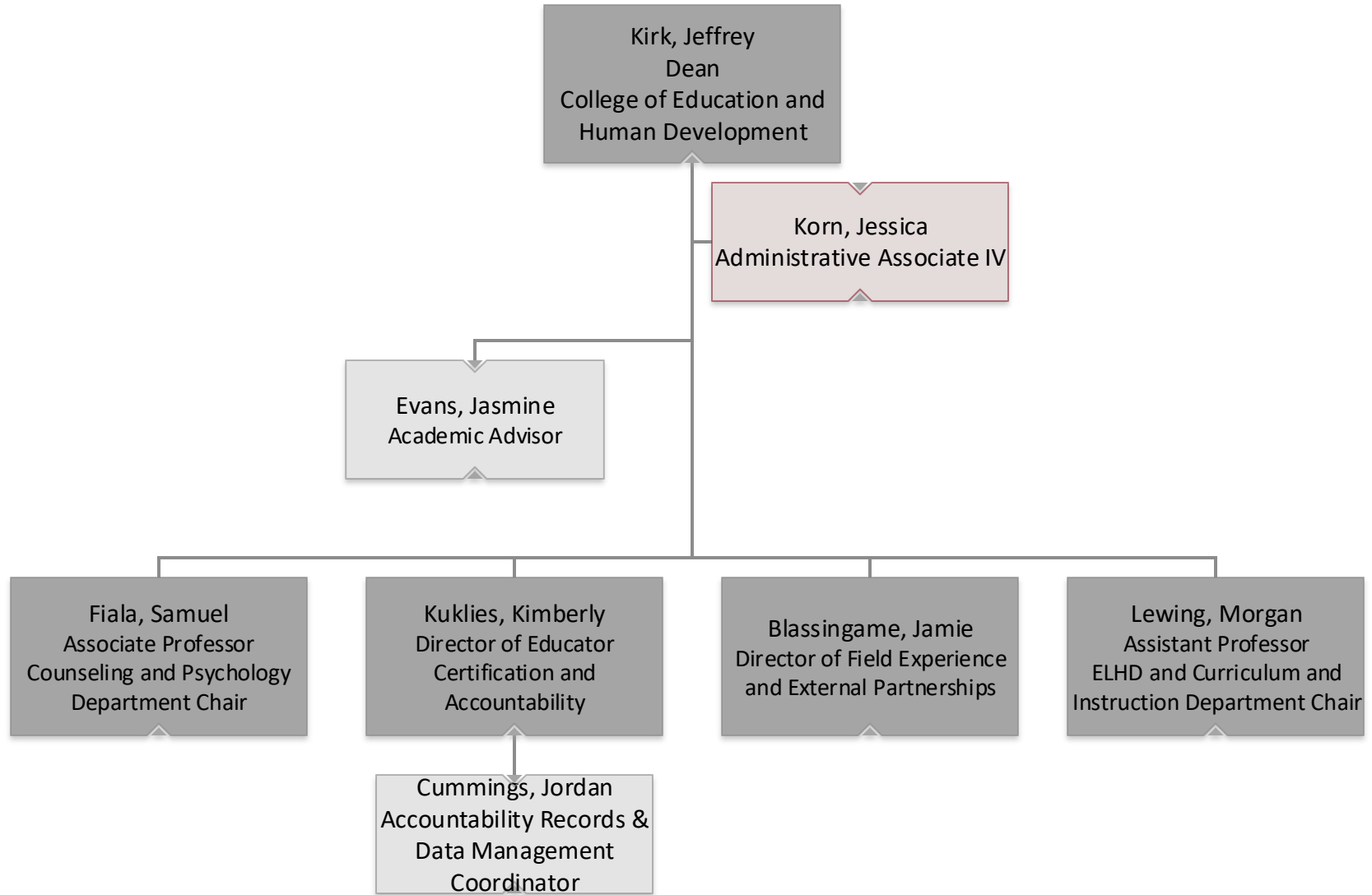


## College of Arts and Sciences Nursing





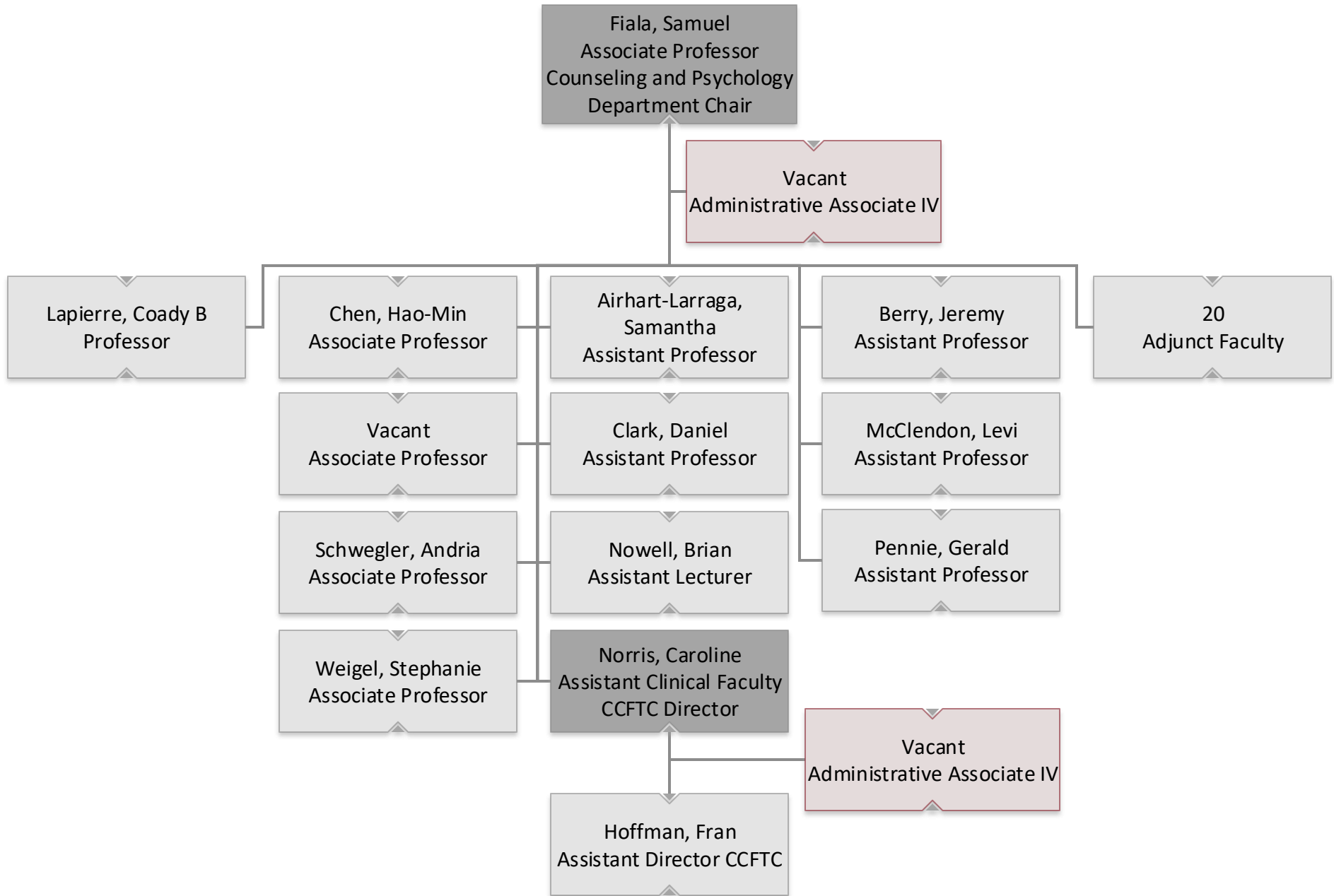
# College of Education and Human Development





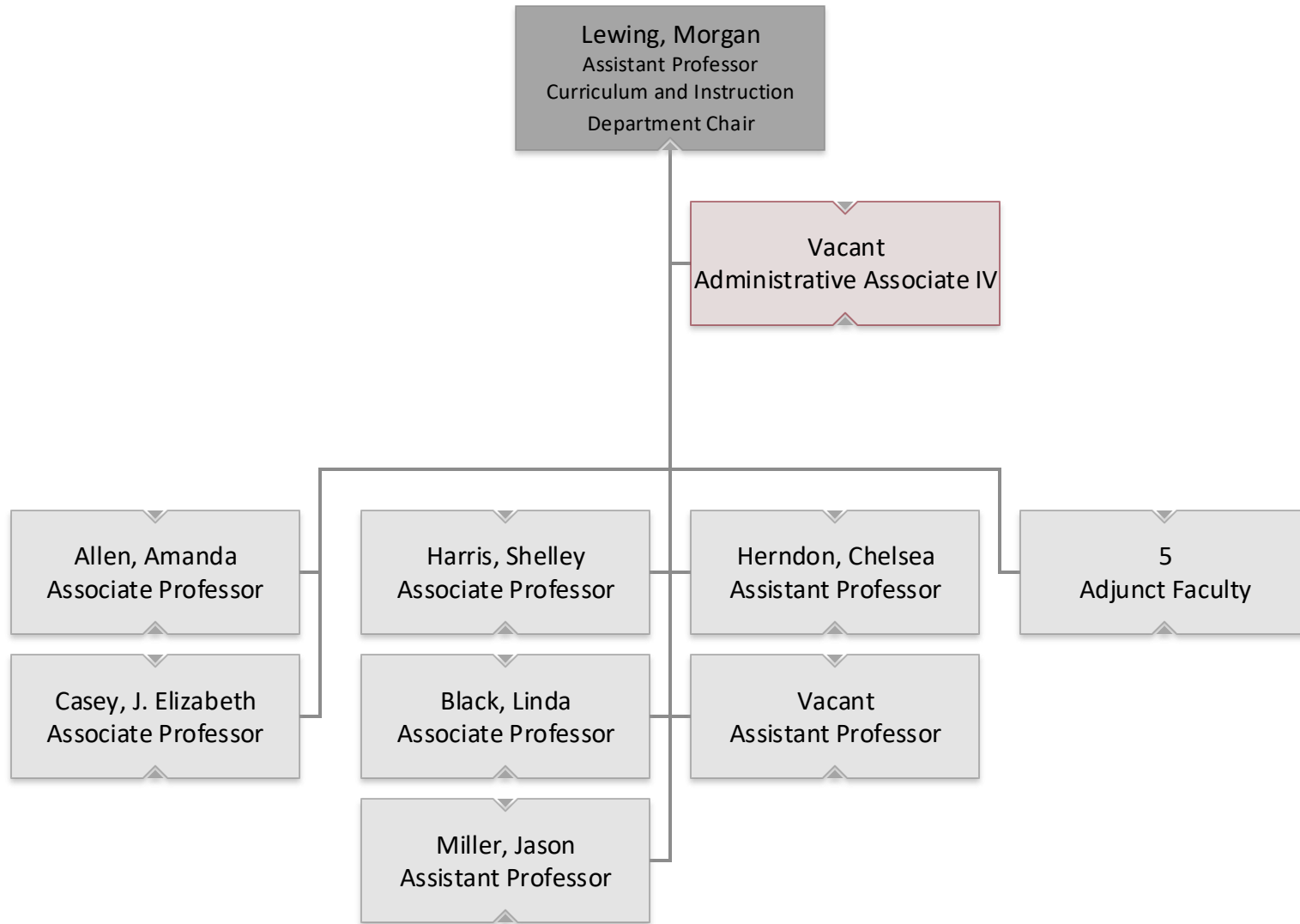


# College of Education and Human Development Counseling and Psychology



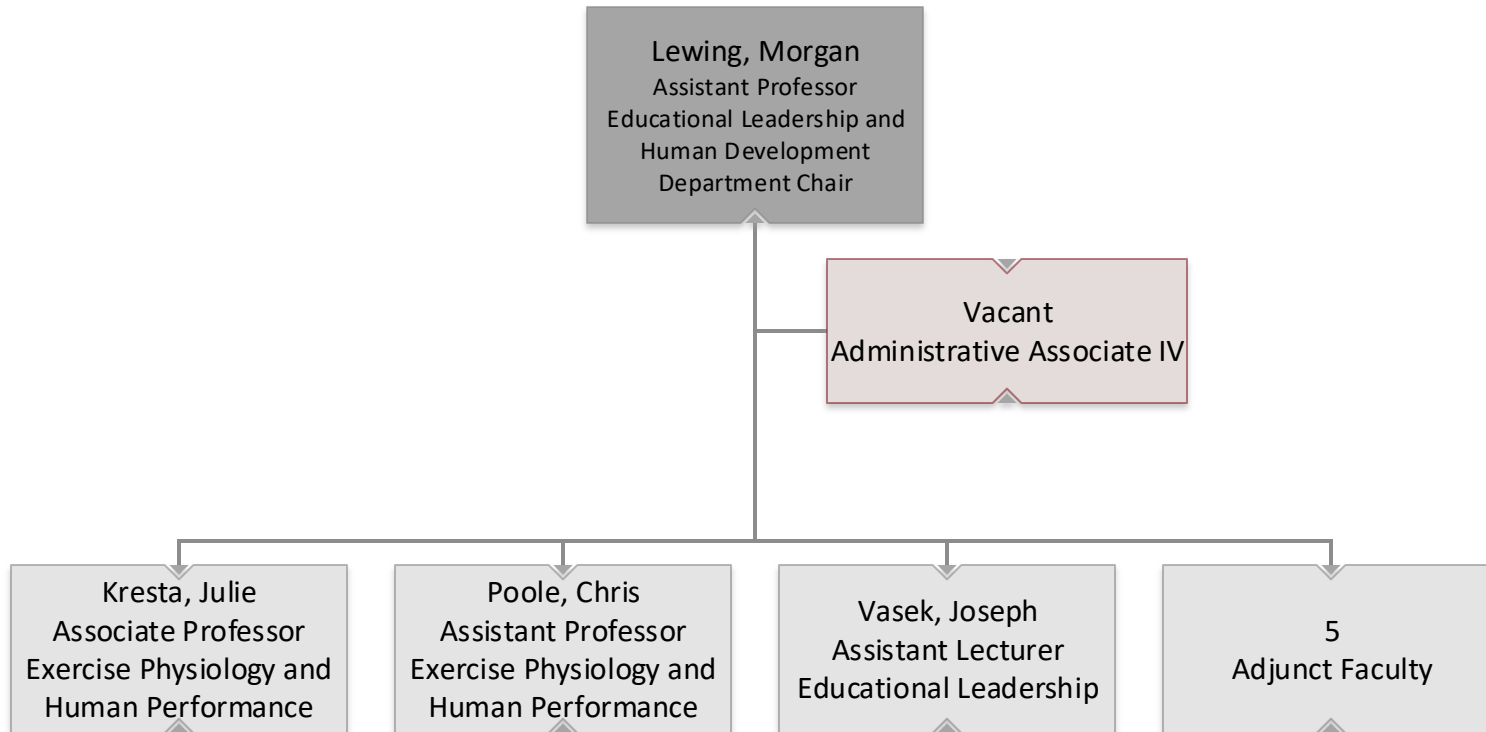


# College of Education and Human Development Curriculum and Instruction



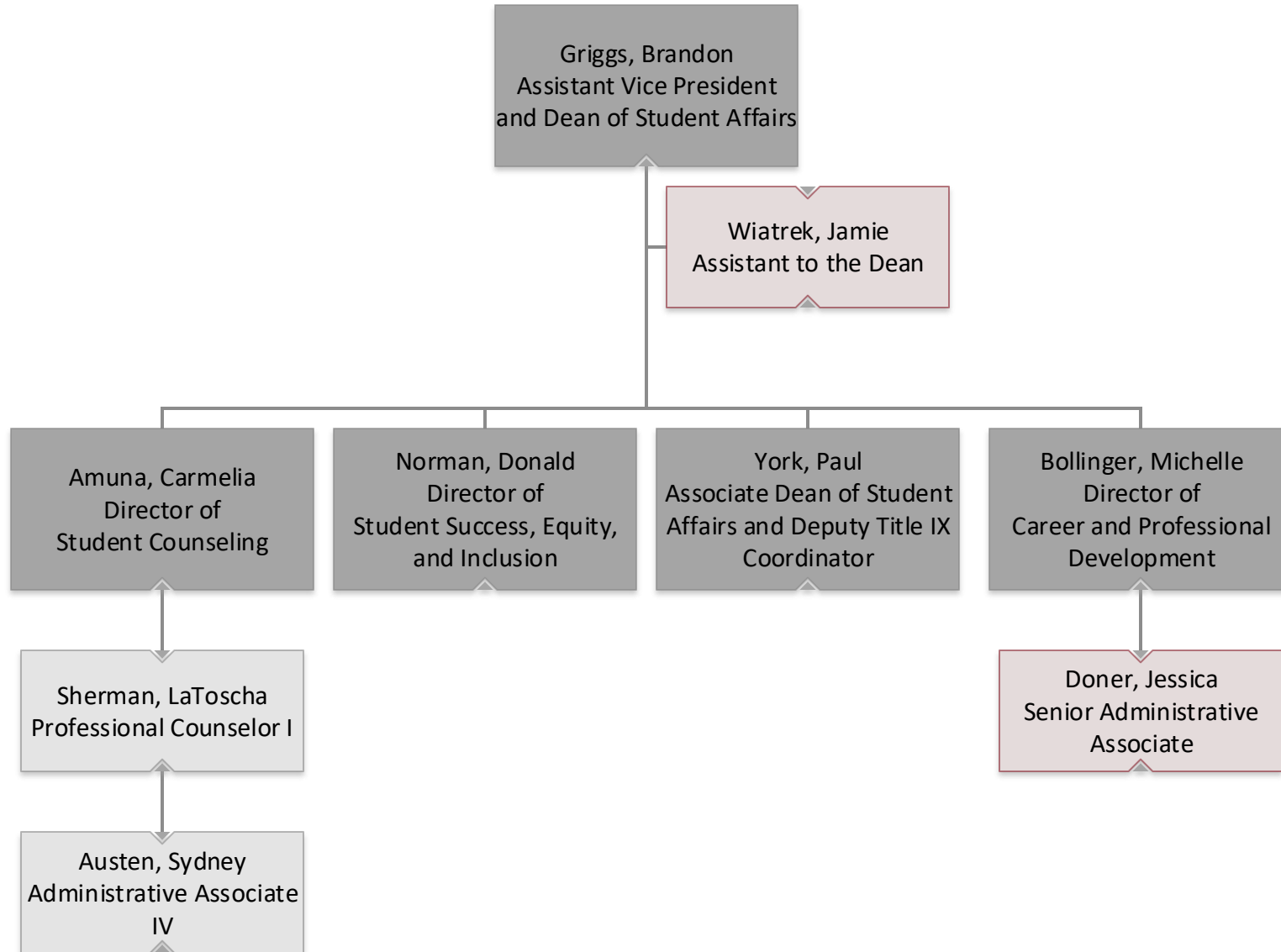


## College of Education and Human Development Educational Leadership and Human Development



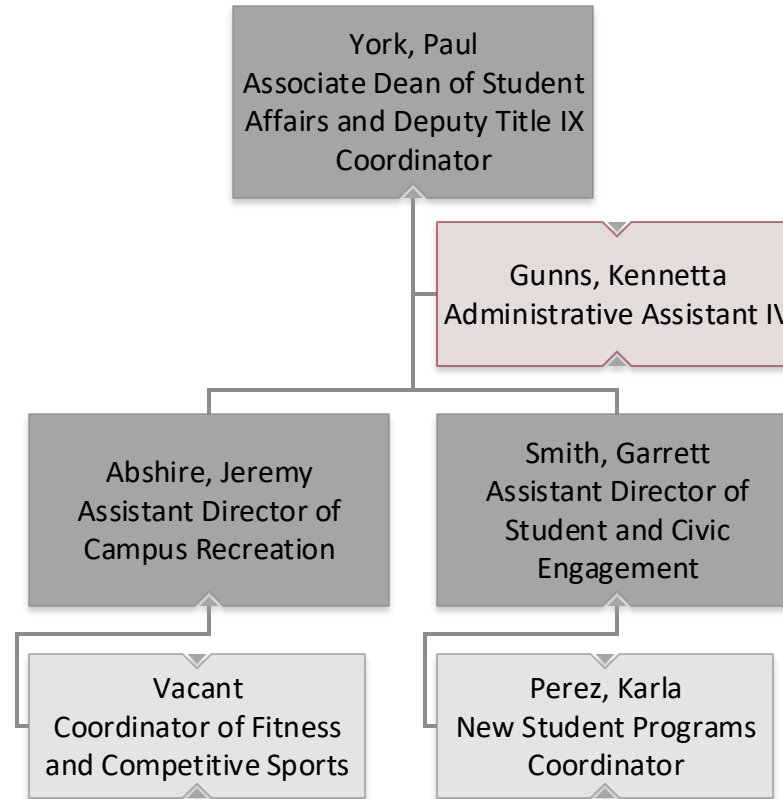


# Student Affairs



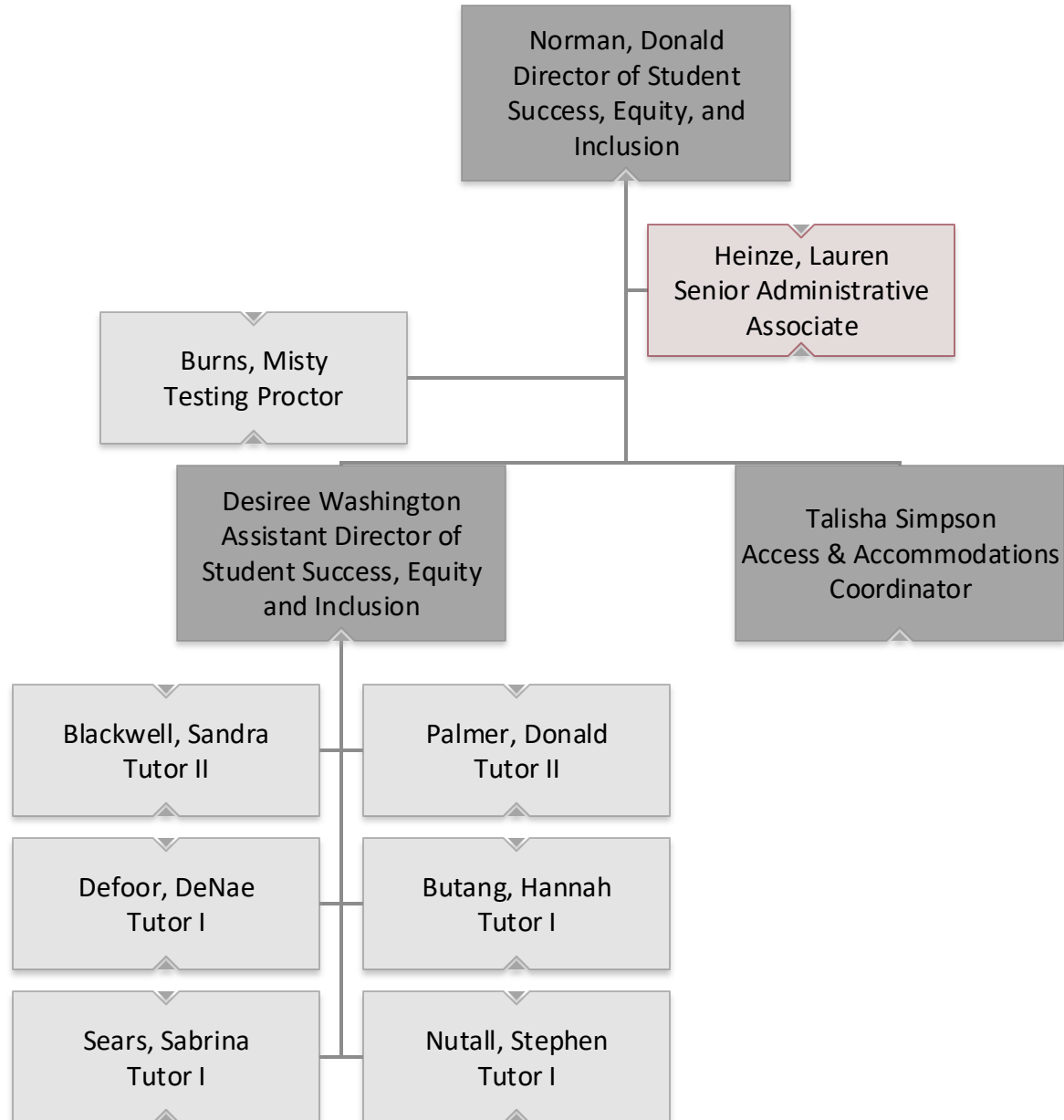


## Student Affairs Associate Dean of Student Affairs



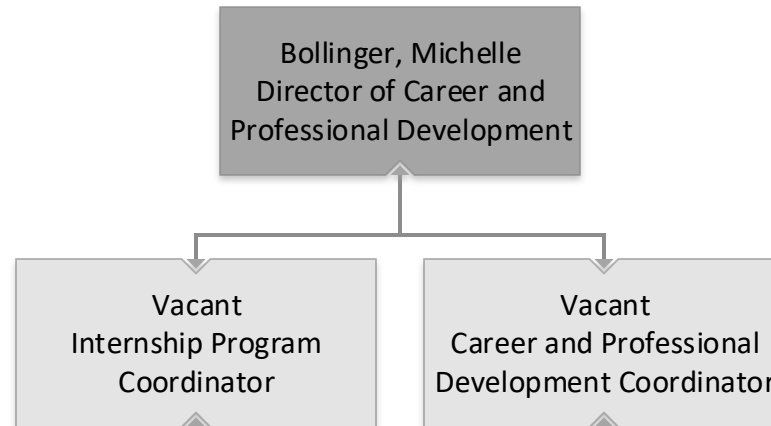


## Student Affairs Student Success, Access and Inclusion



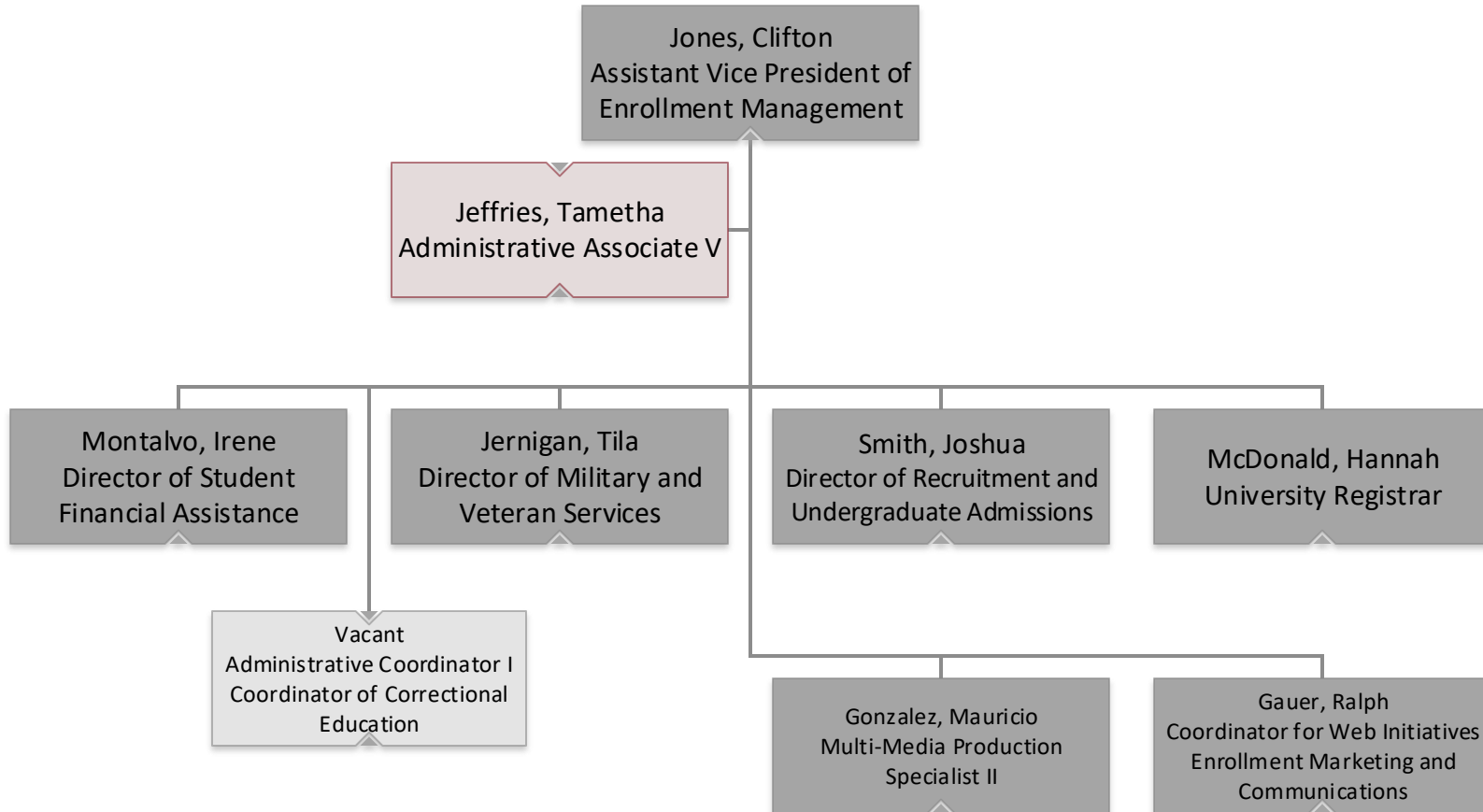


## Student Affairs Career and Professional Development





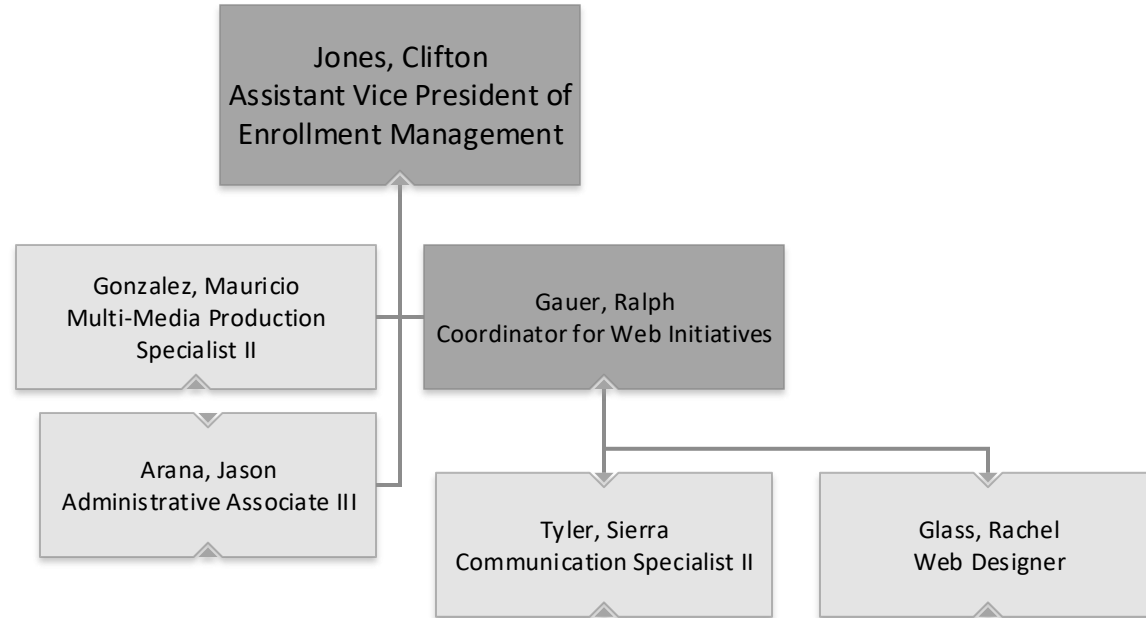
# Enrollment Management





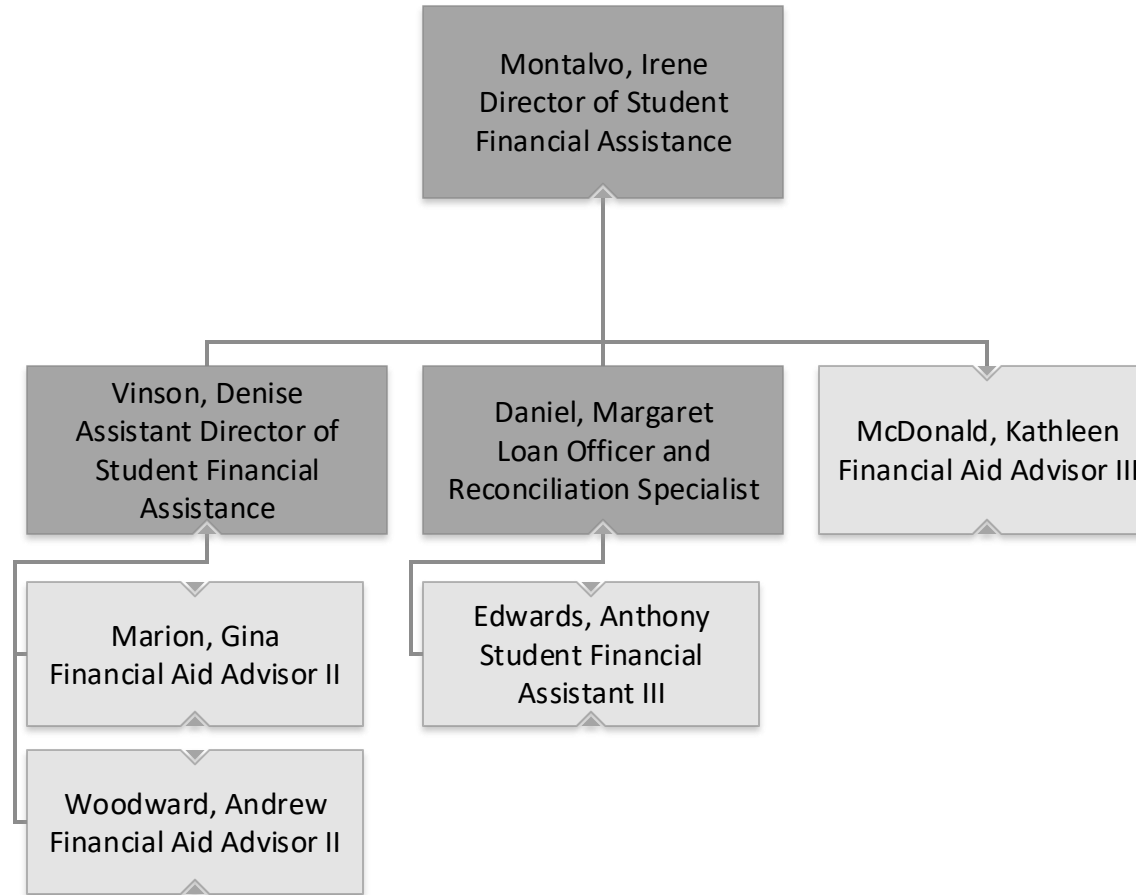


# Enrollment Management Marketing and Communications



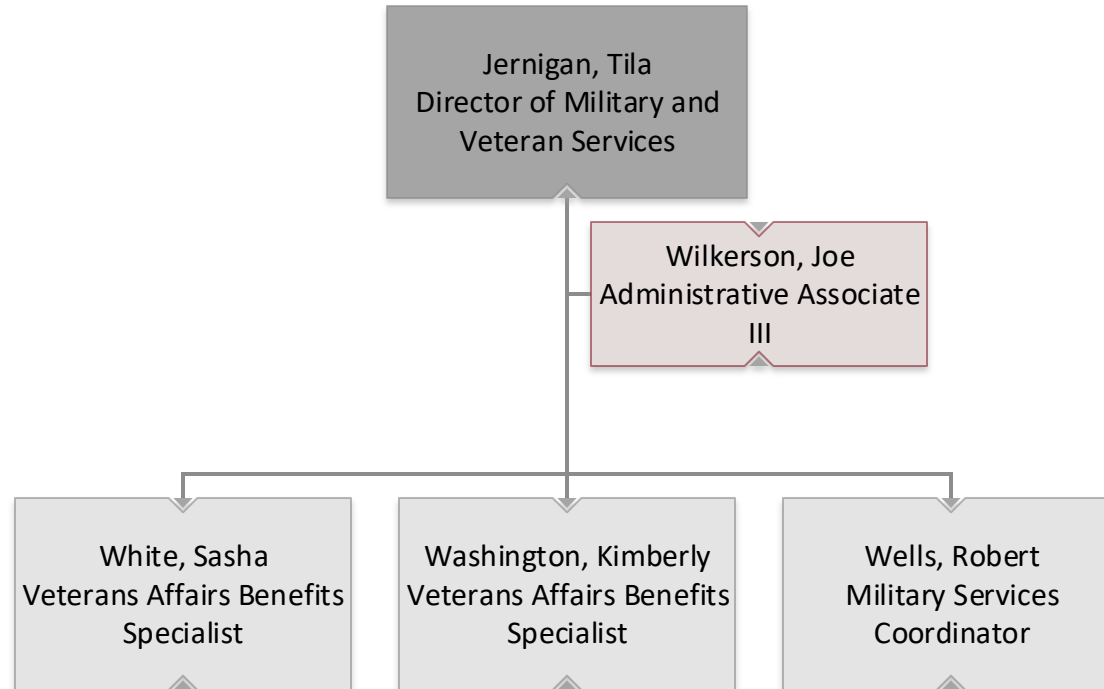


# Student Financial Assistance



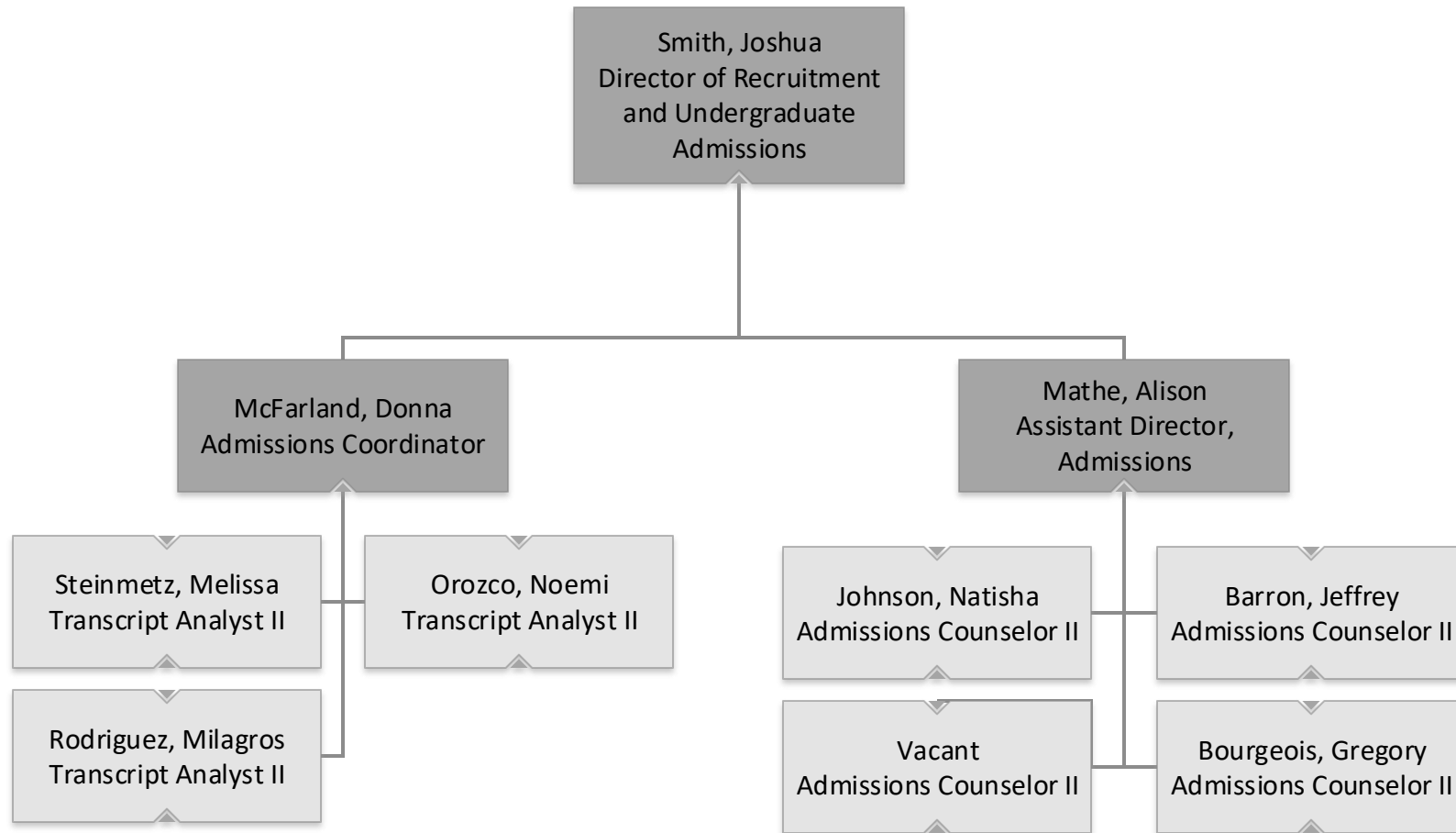


## Military and Veteran Services



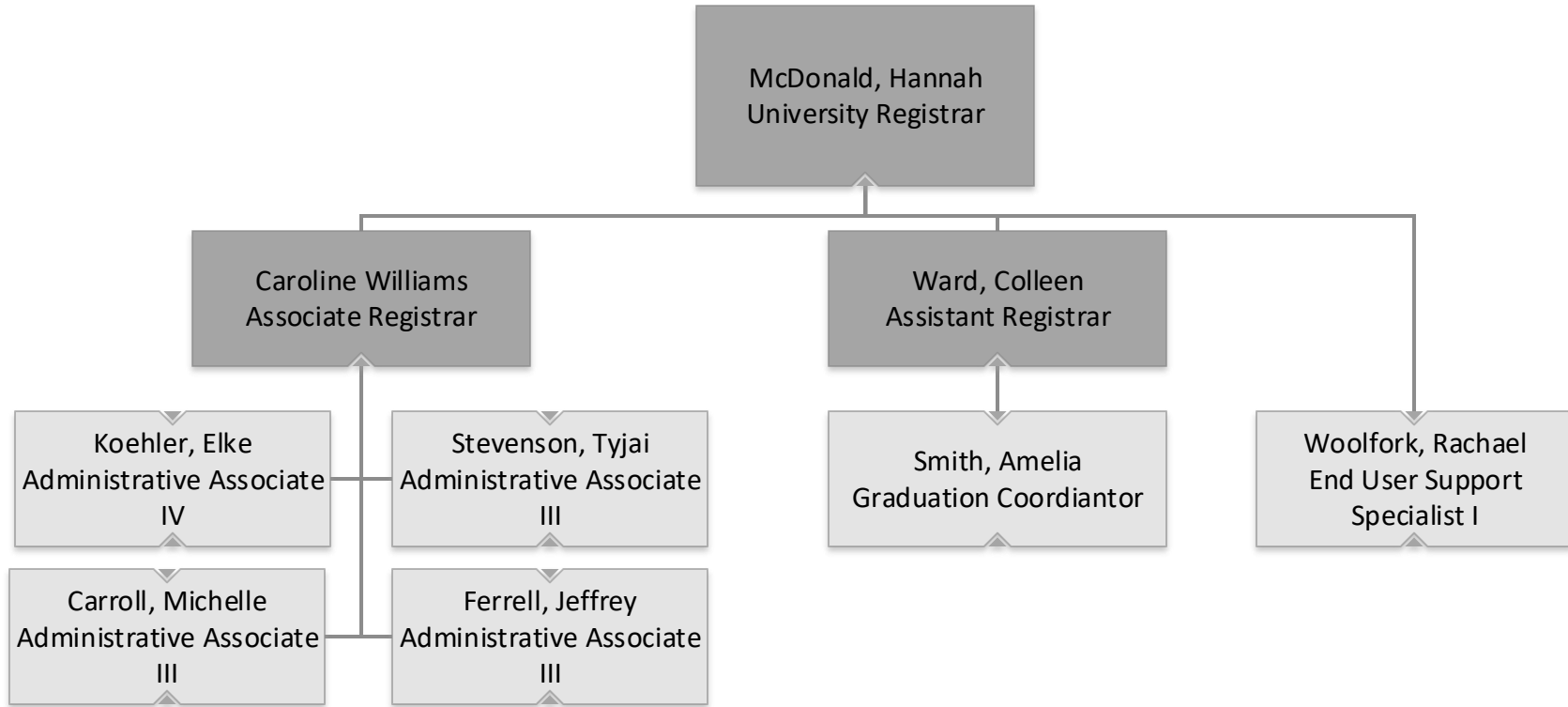


# Recruitment and Undergraduate Admissions



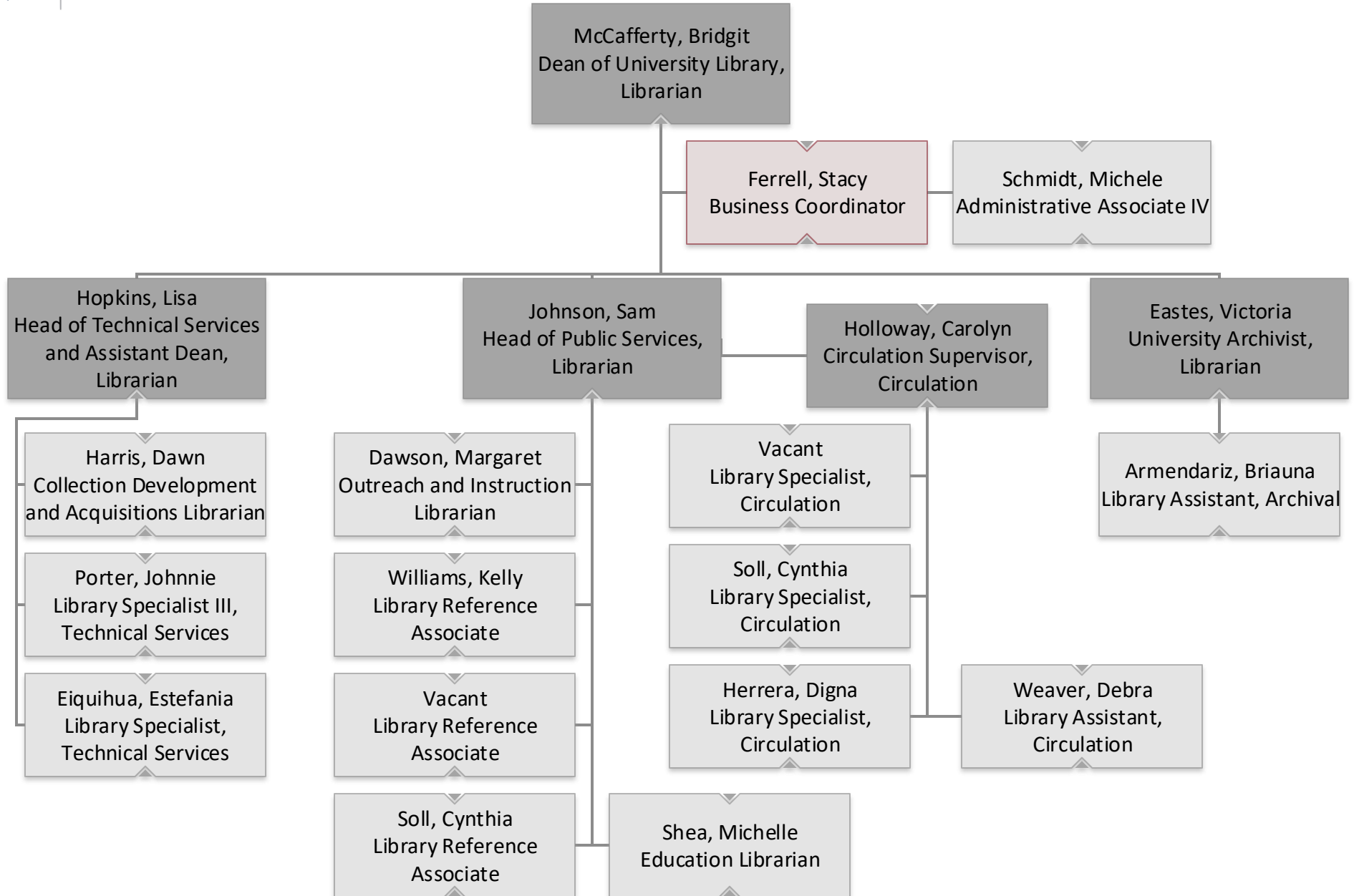


# University Registrar



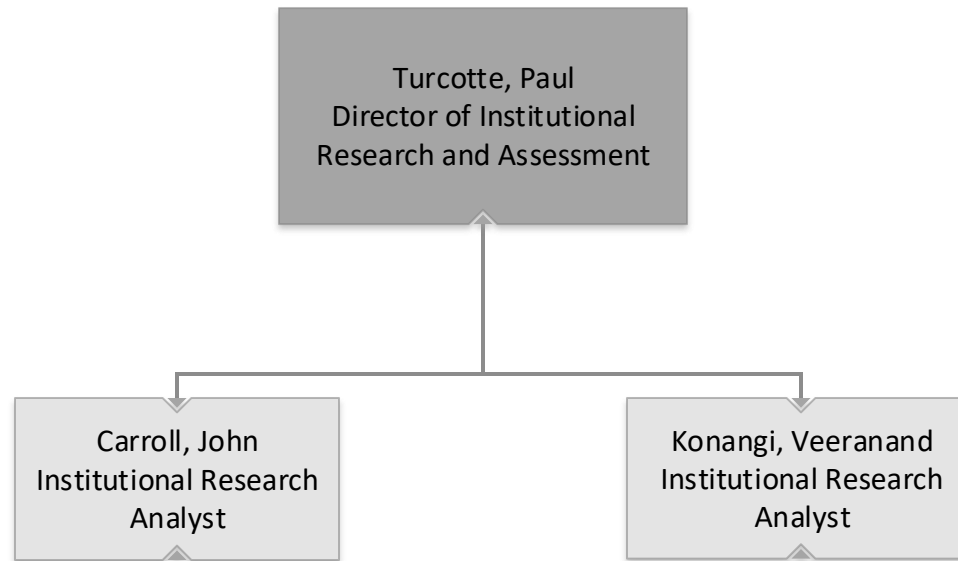


# University Library



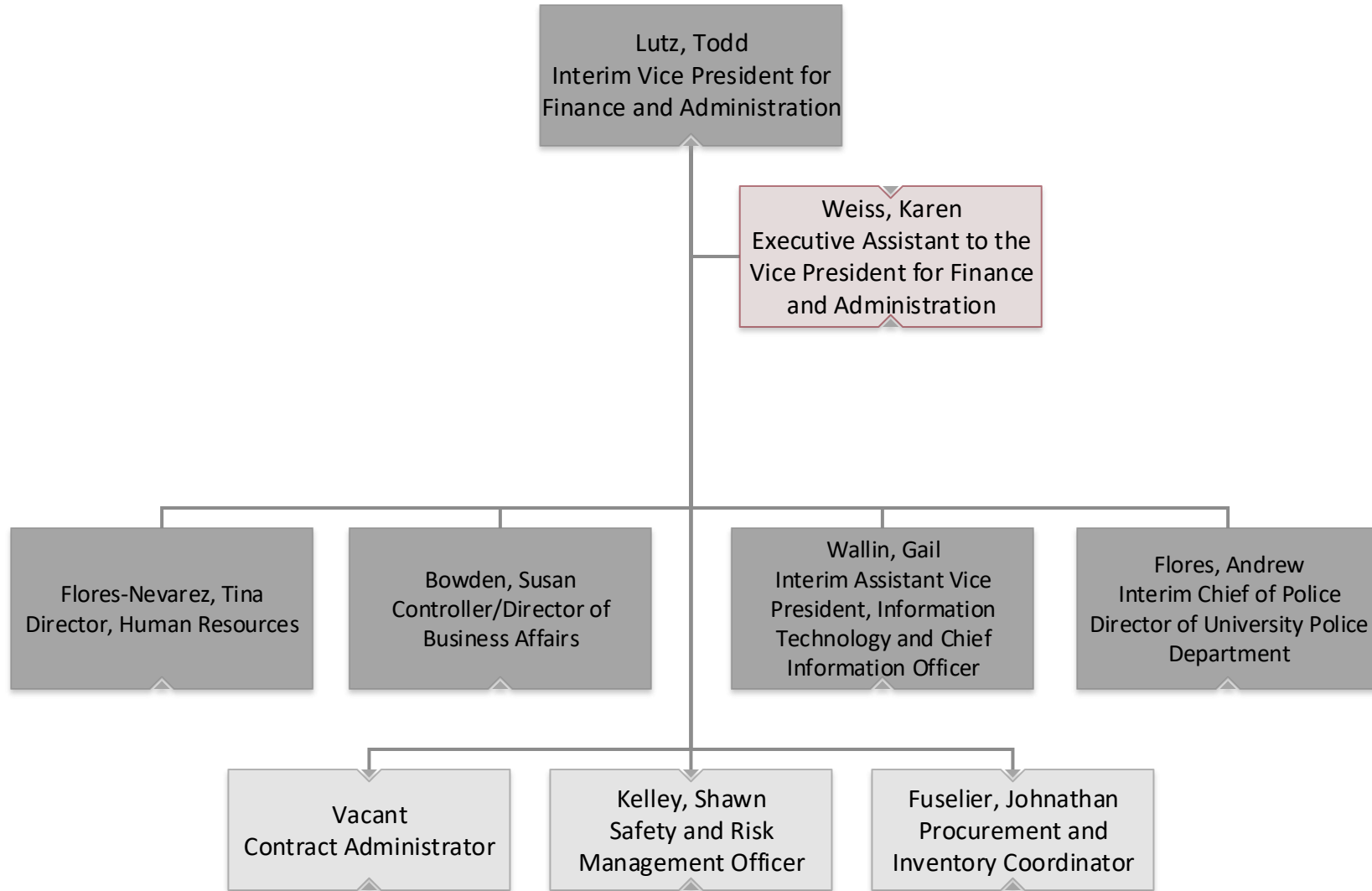


## Institutional Research and Assessment





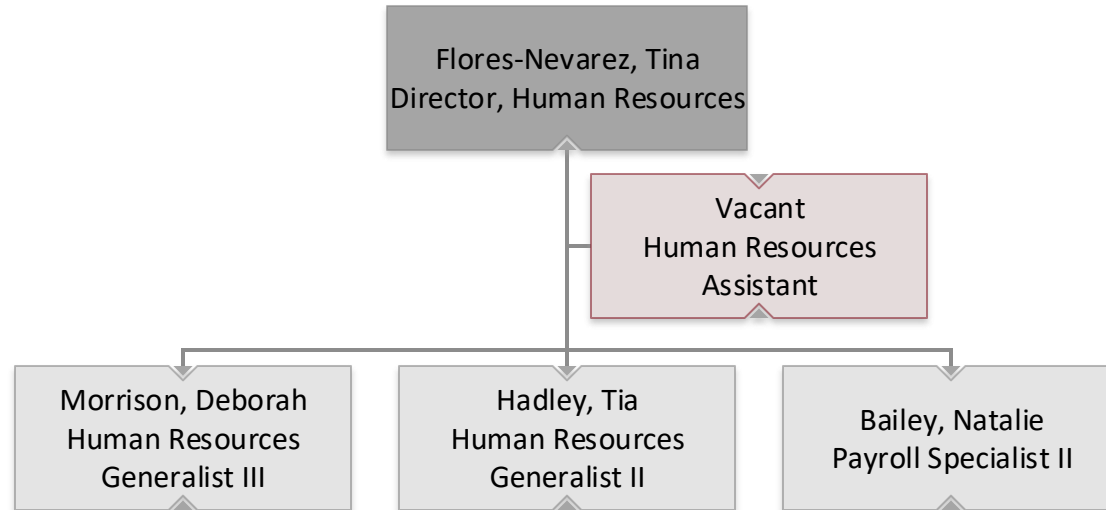
## Vice President for Finance and Administration





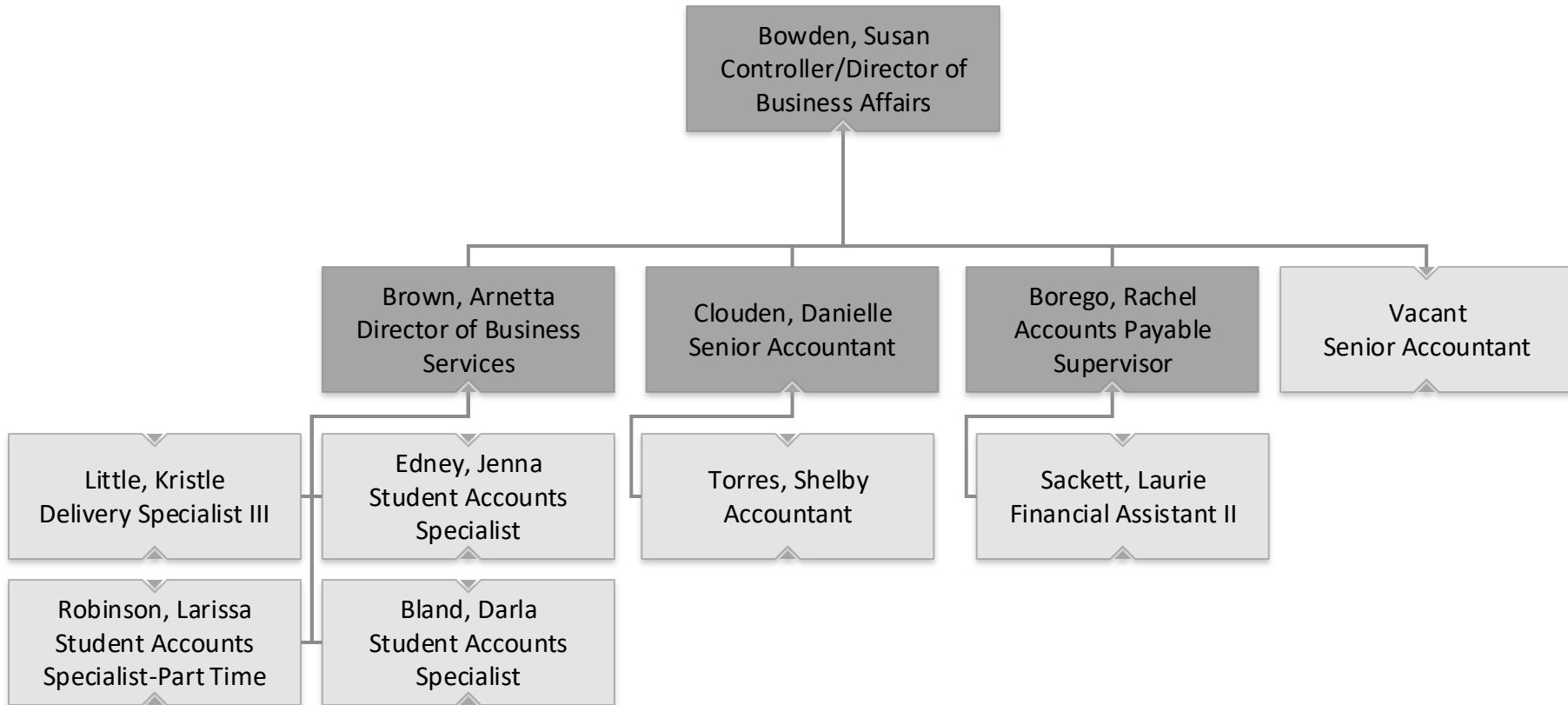


# Human Resources



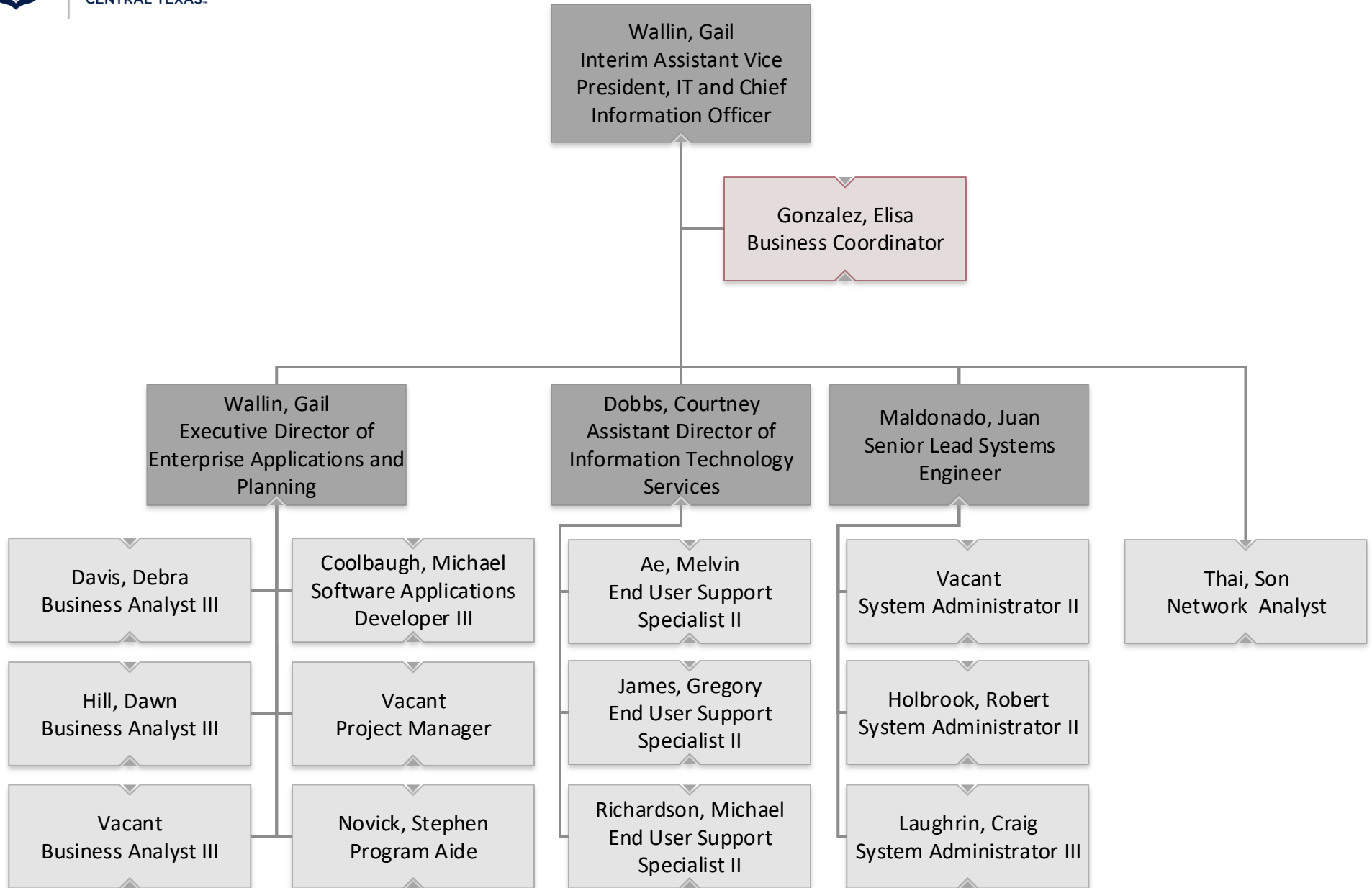


# Business Affairs



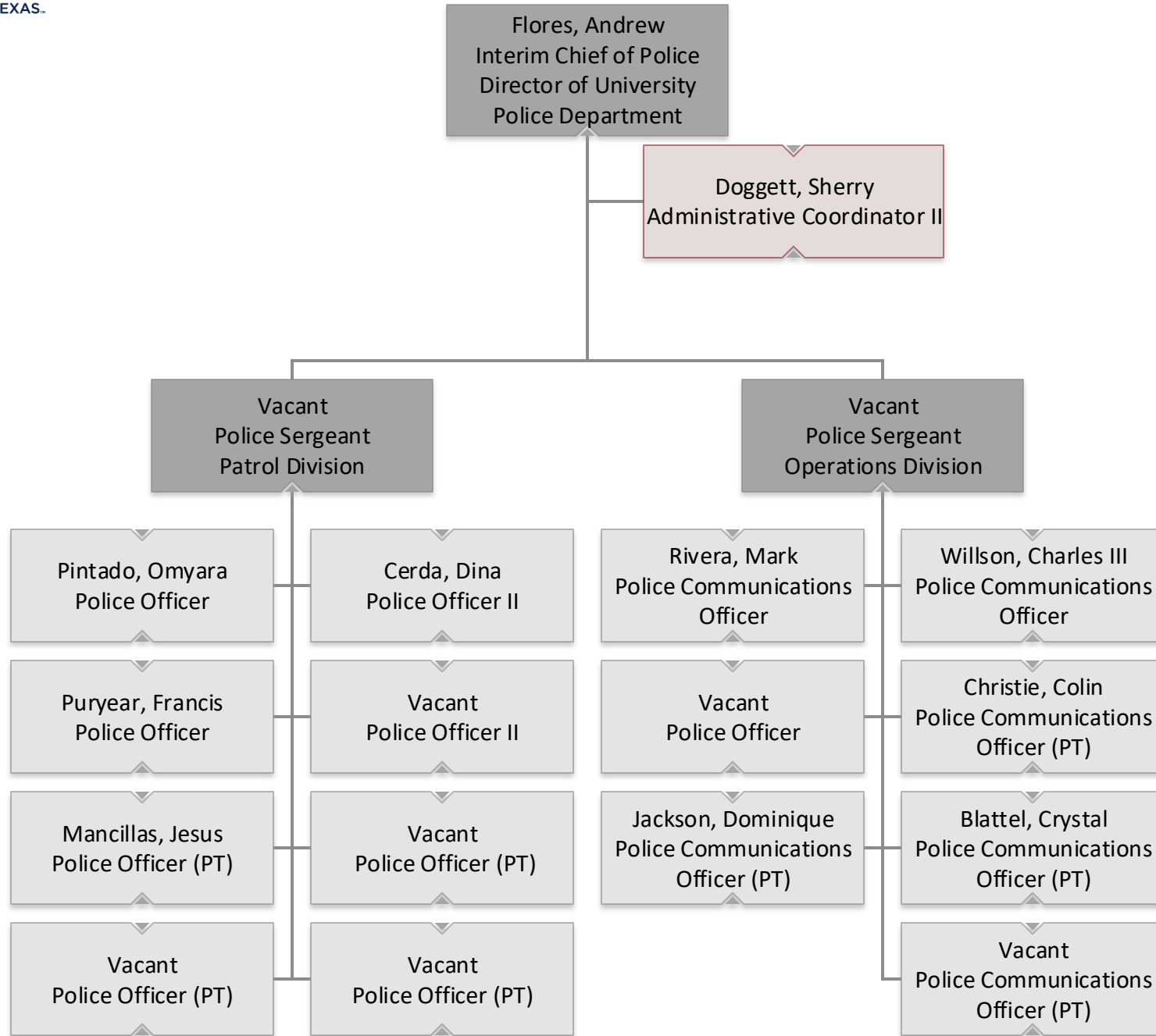


# Information Technology





# University Police





# Office of Research and Economic Development

